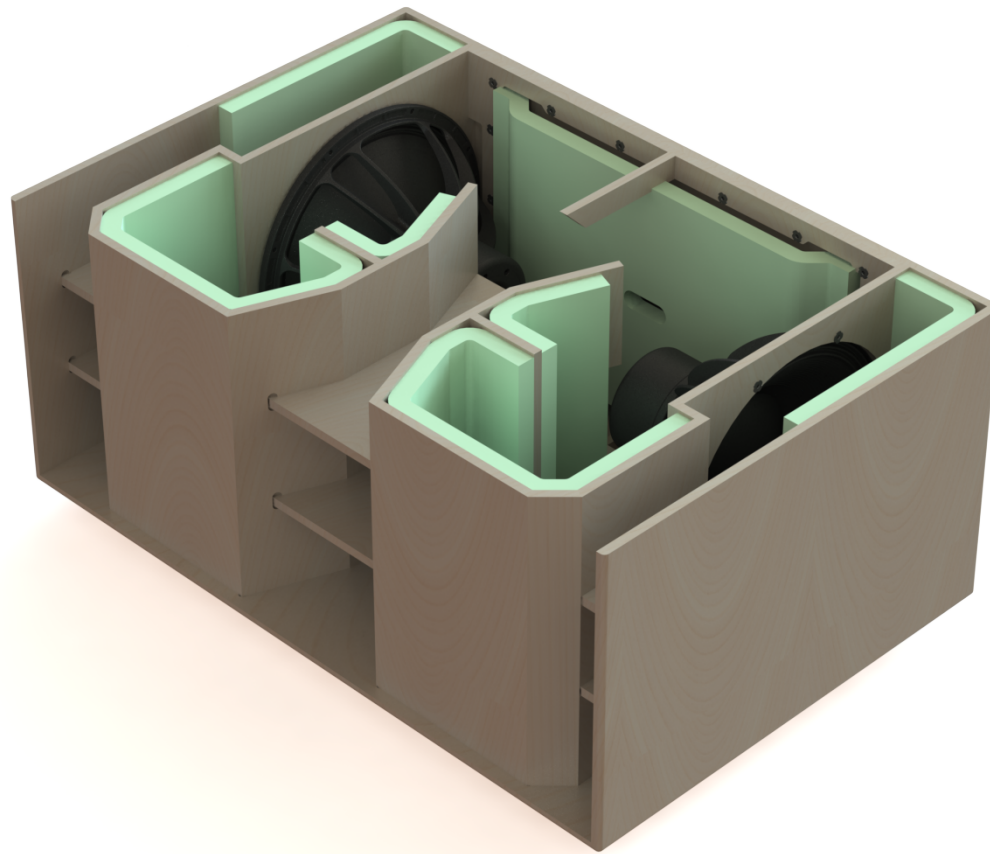




S218BP

6th order Bandpass Subwoofer

Engineered using 2x18" Neodymium woofer – 18DS115 8 ohm



COMPONENTS



- 2x 18DS115 8 ohm
- 2x Neutrik NL4MPR
- 34x M6 Wood T-Nuts
- 18x TSEI M6x30
- 16x TCEI M6x40 with washer and grower washer
- 3mm EPDM stripes
- Edilfiber damping material

Enclosure material: 15mm Birch plywood

18DS115

8Ω

LF Drivers - 18.0 Inches



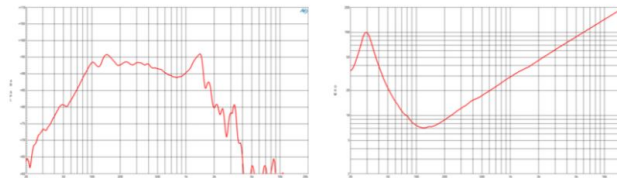
- 3400 W continuous program power capacity
- 116 mm (4.5 in) four layer aluminum voice coil
- 30 - 500 Hz response
- 98 dB sensitivity
- Double silicone spider with optimized compliance
- Ventilated voice coil gap for reduced power compression
- Aluminium demodulating ring for very low distortion



This next evolution subwoofer uses a new, longer, four layer aluminum voice coil. The result is more energy in the gap, less heat, higher sensitivity, higher power handling, lower distortion and better overall performance. The 18DS115 features a 40mm long, 4.5 inch diameter (116mm) Copper Clad Aluminum Wire voice coil. With a 1700watt AES power rating, 98 dB sensitivity, and over 14.0mm of Xvar, this high energy subwoofer is a significant step forward from similar models in the B&C range.

18DS115

LF Drivers- 18.0 Inches



SPECIFICATIONS

Nominal Diameter	460 mm (18.0 in)
Nominal Impedance	8 Ω
Minimum Impedance	7.0 Ω
Nominal Power Handling ¹	1700 W
Continuous Power Handling ²	3400 W
Sensitivity ³	98.0 dB
Frequency Range	30 - 500 Hz
Voice Coil Diameter	116 mm (4.5 in)
Winding Material	Aluminium
Former Material	Glass Fibre
Winding Depth	40.0 mm (1.57 in)
Magnetic Gap Depth	14.0 mm (0.55 in)
Flux Density	0.8 T

DESIGN

Surround Shape	Triple Roll
Cone Shape	Radial
Magnet Material	Neodymium Inside Slug
Spider	Double Silicone
Pole Design	T-Pole
Woofer Cone Treatment	TWP Waterproof Both Sides
Recommended Enclosure	100.0 dm ³ (3.53 ft ³)
Recommended Tuning	40 Hz

PARAMETERS⁴

Resonance Frequency	30 Hz
Re	5.0 Ω
Qes	0.21
Qms	4.3
Qts	0.2
Vas	168.0 dm ³ (5.93 ft ³)
Sd	1210.0 cm ² (187.55 in ²)
η _v	2.2 %
X _{max}	16.5 mm
X _{var}	14.0 mm
M _{ms}	330.0 g
Bl	39.0 Txm
Le	3.85 mH
EBP	142 Hz

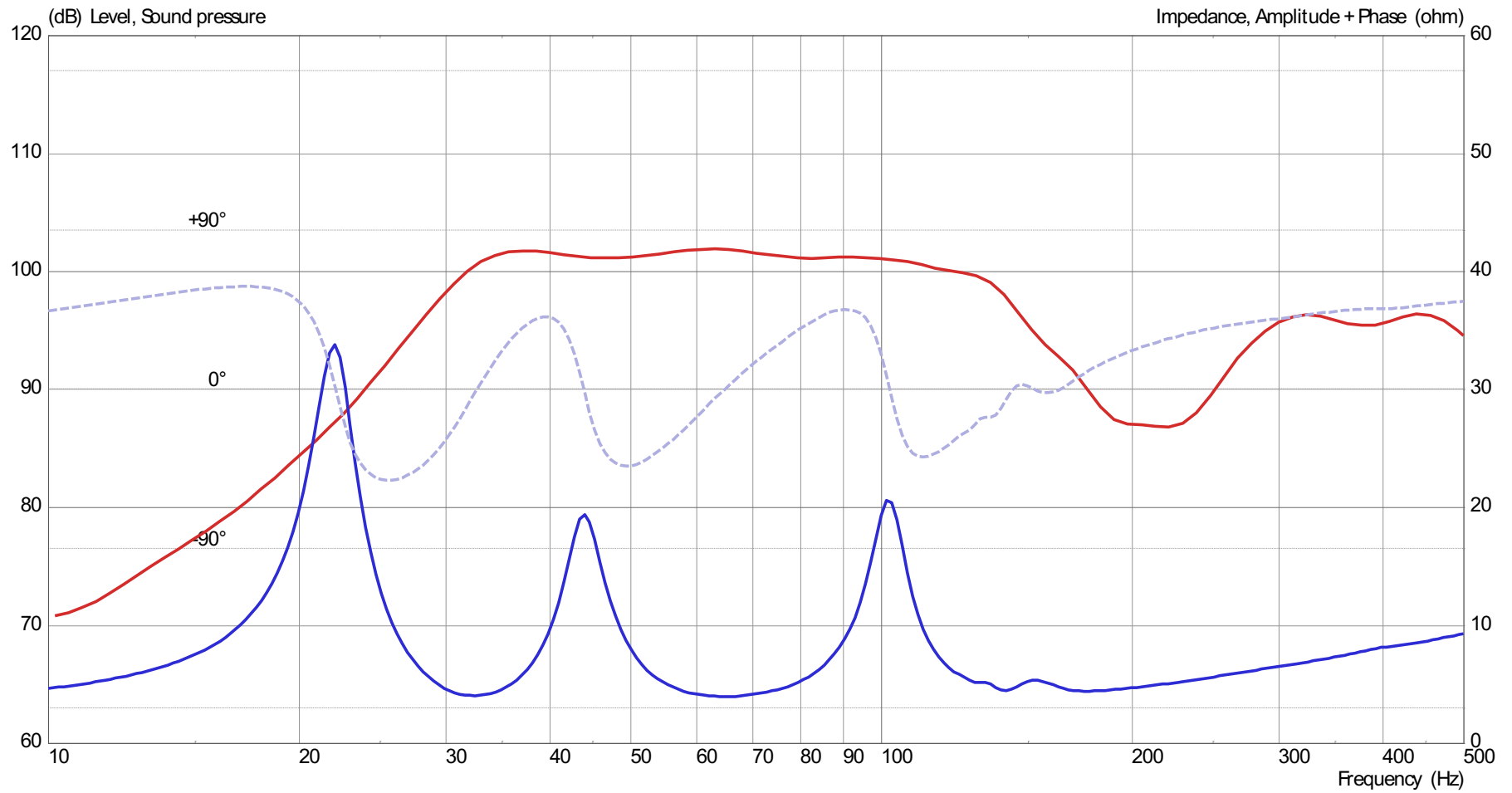
MOUNTING AND SHIPPING INFO

Overall Diameter	460 mm (18.11 in)
Bolt Circle Diameter	440 mm (17.32 in)
Baffle Cutout Diameter	422.0 mm (16.61 in)
Depth	248 mm (9.76 in)
Flange and Gasket Thickness	16 mm (0.63 in)
Air Volume Occupied by Driver	10.0 dm ³ (0.35 ft ³)
Net Weight	12.0 kg (26.46 lb)
Shipping Units	1
Shipping Weight	13.6 kg (29.98 lb)
Shipping Box	500x455x275 mm (19.69x19.49x10.83 in)

SERVICE KIT

Recone kit	RCK18DS1158
------------	-------------

1. 2 hours test made with continuous pink noise signal within the range Fs-10Fs. Power calculated on rated minimum impedance. Loudspeaker in free air.
 2. Power on Continuous Program is defined as 3 dB greater than the Nominal rating.
 3. Applied RMS Voltage is set to 2.83 V for 8 ohms Nominal Impedance.
 4. Thiele-Small parameters are measured after a high level 20 Hz sine wave preconditioning test.

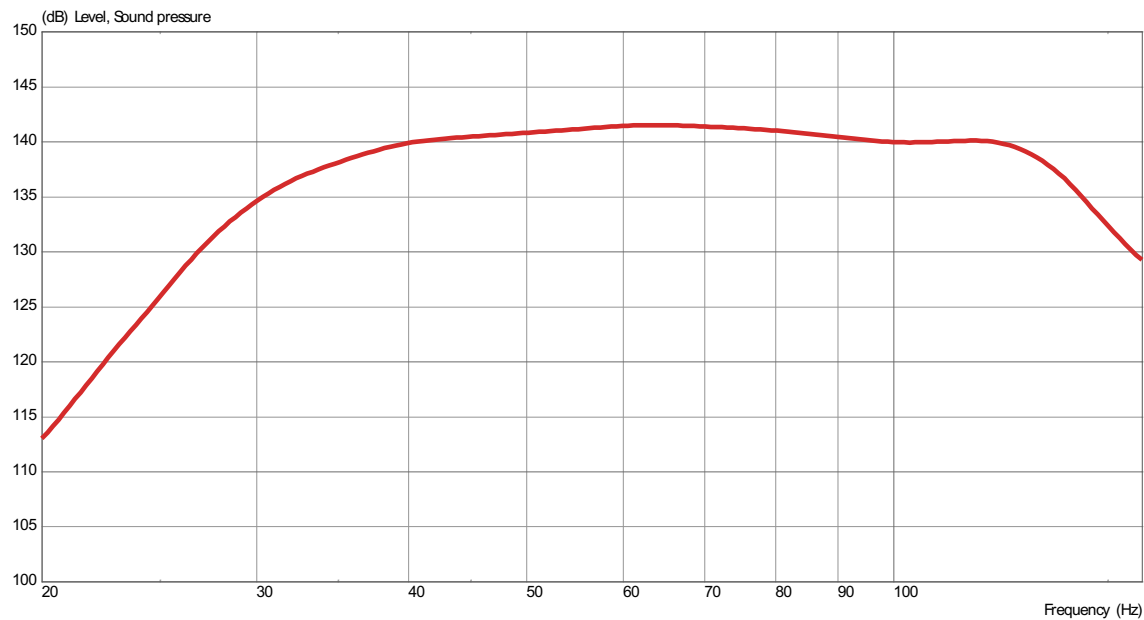


Frequency response 2V@1m in Half-space and Impedance response

CEA2010B

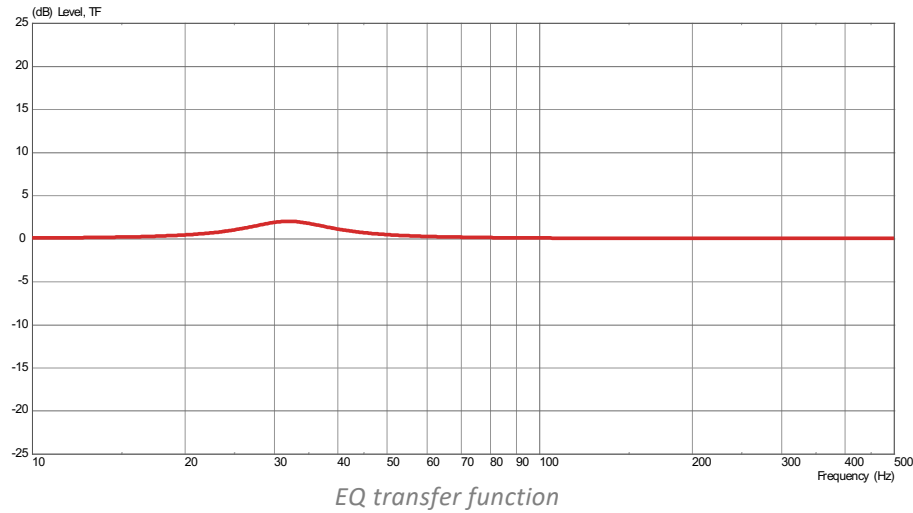


1mt in Half-Space

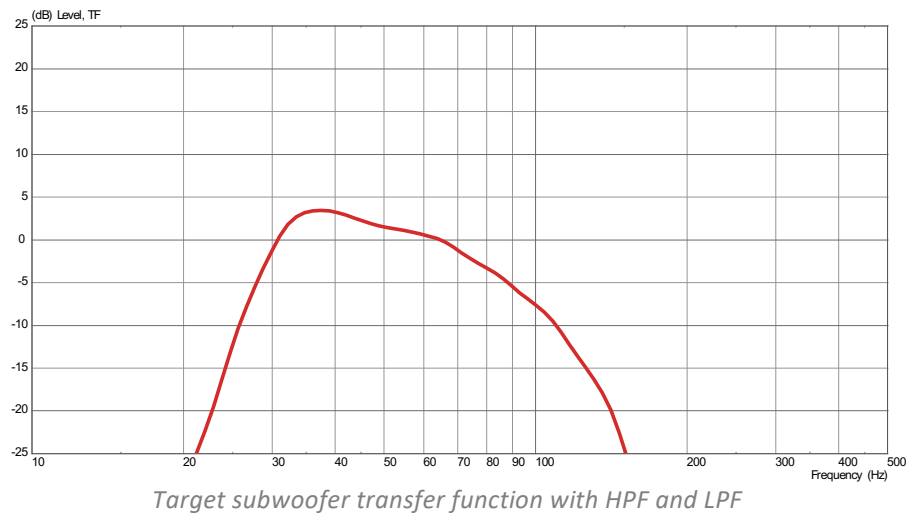


Tone Burst Center Frequency (HZ)	Weighted & Limited Maximum SPL (dB)
20	103
25	123
32	136
40	140
50	141
63	142
80	141
100	140
125	140
160	123

CEA2010B Broadband Peak SPL = 139dB @1mt in Half-Space



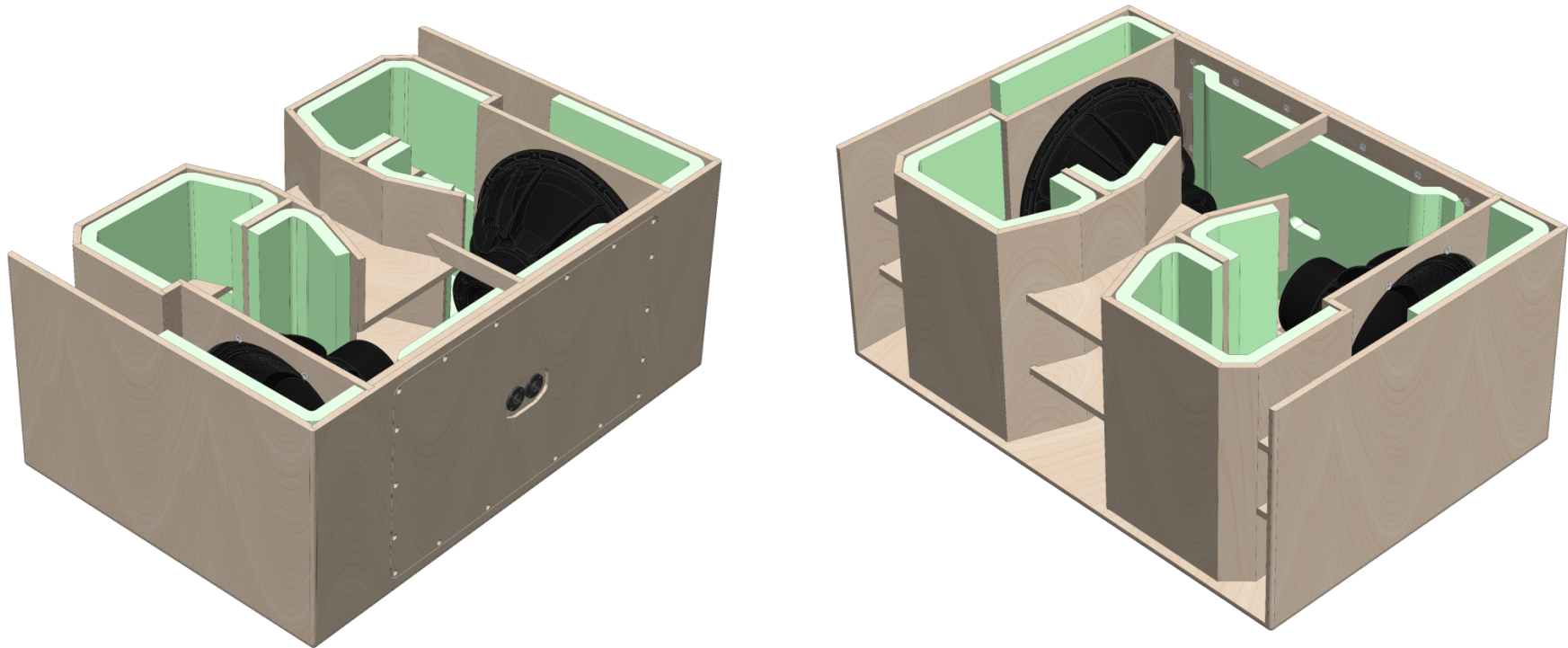
Peaking #1: +3dB – Q:3 – Frq:33Hz



*HPF and LPF:
HPF: 29Hz – BTW 24dB/Oct
LPF: 80Hz – LR 24dB/Oct*

DAMPING MATERIAL

EDILFIBER (Polyester) 30Kg/m³ – 30mm thick

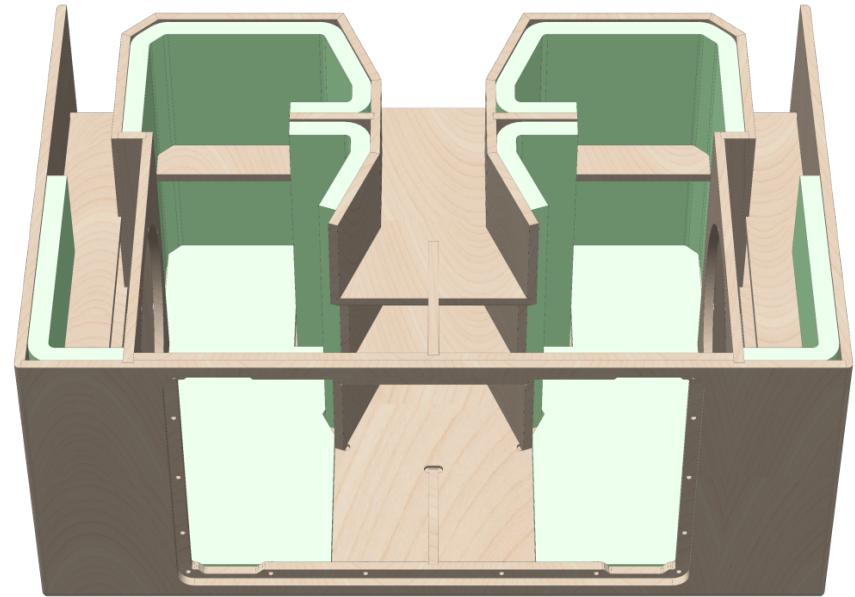
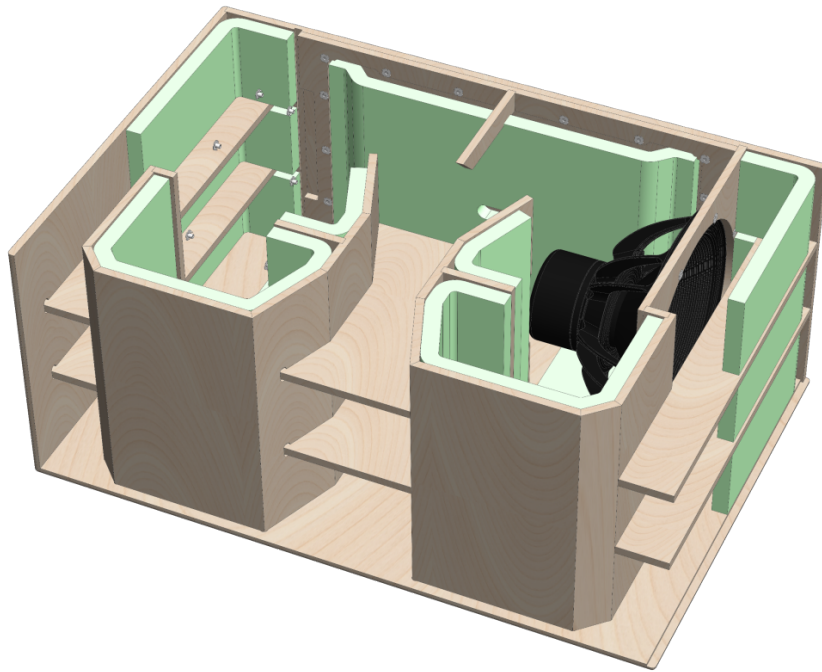


Follow carefully the quantity and positioning

www.bcspeakers.com - Suggested designs

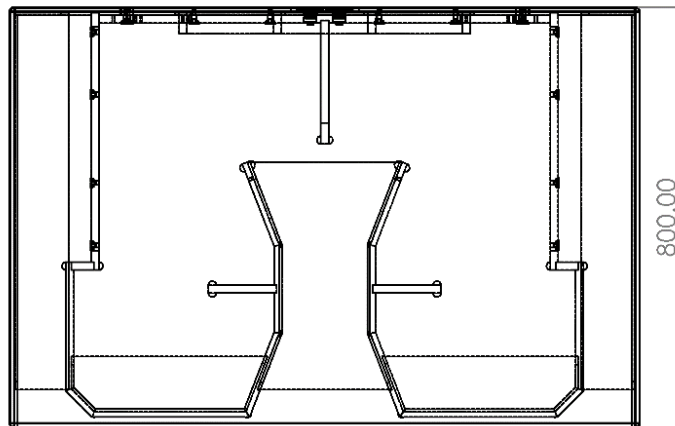
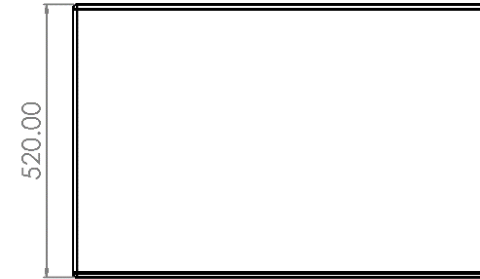
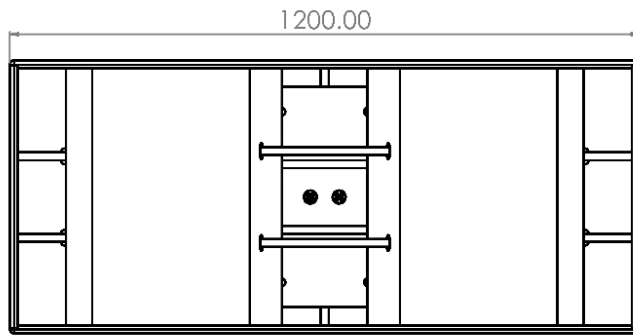
DAMPING MATERIAL

EDILFIBER (Polyester) 30Kg/m³ – 30mm thick

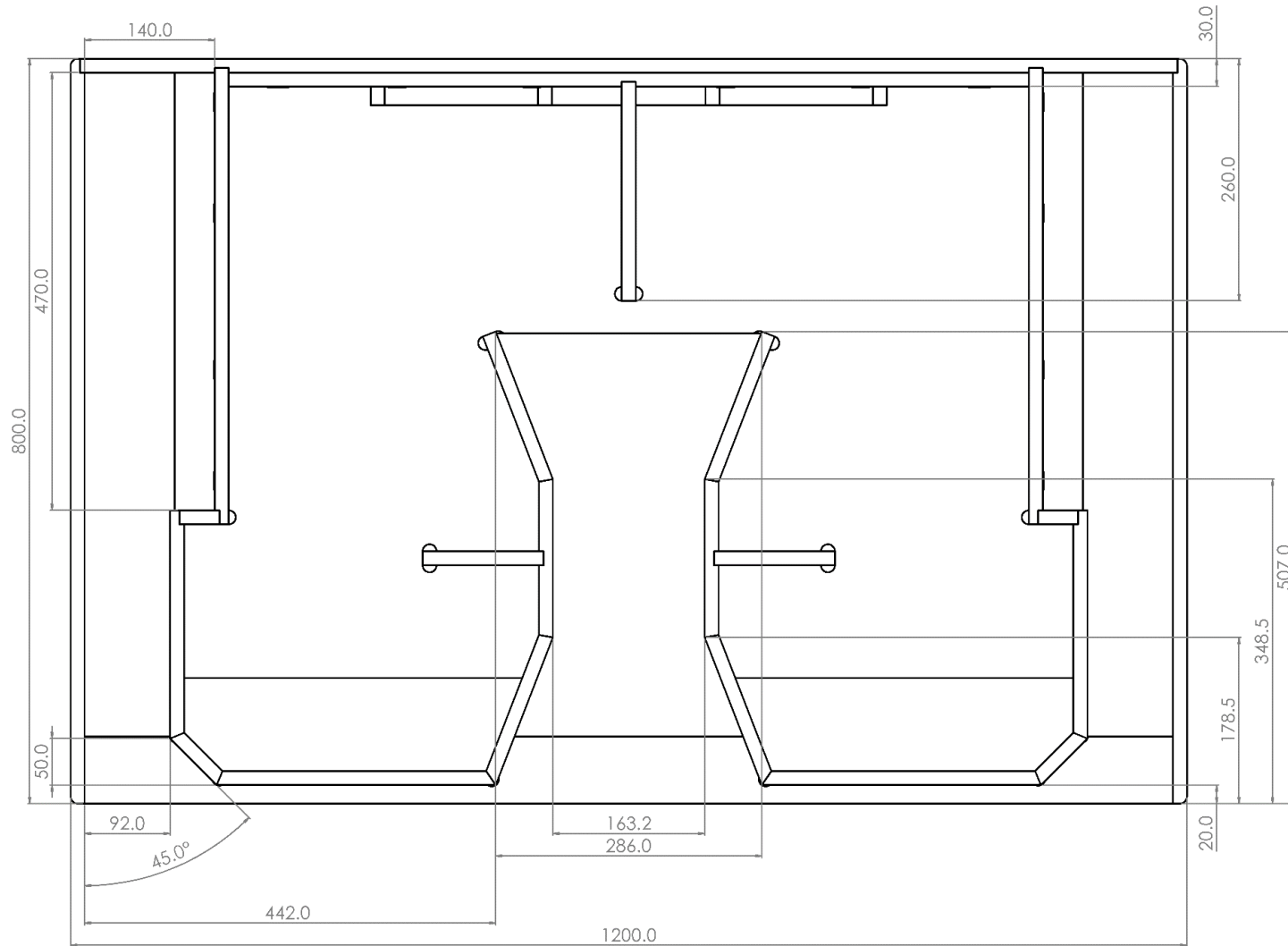


Follow carefully the quantity and positioning

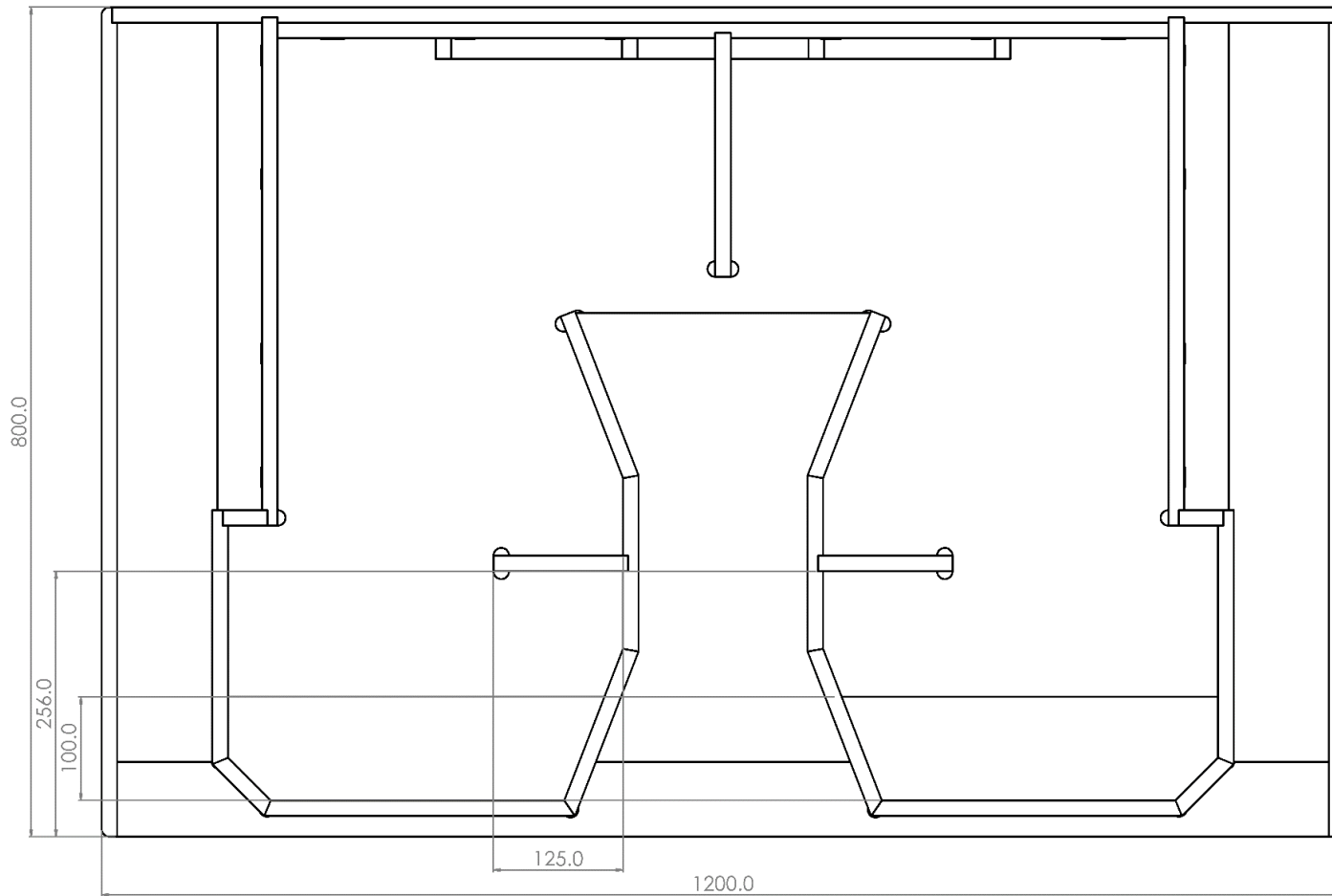
GLOBAL DIMENSIONS



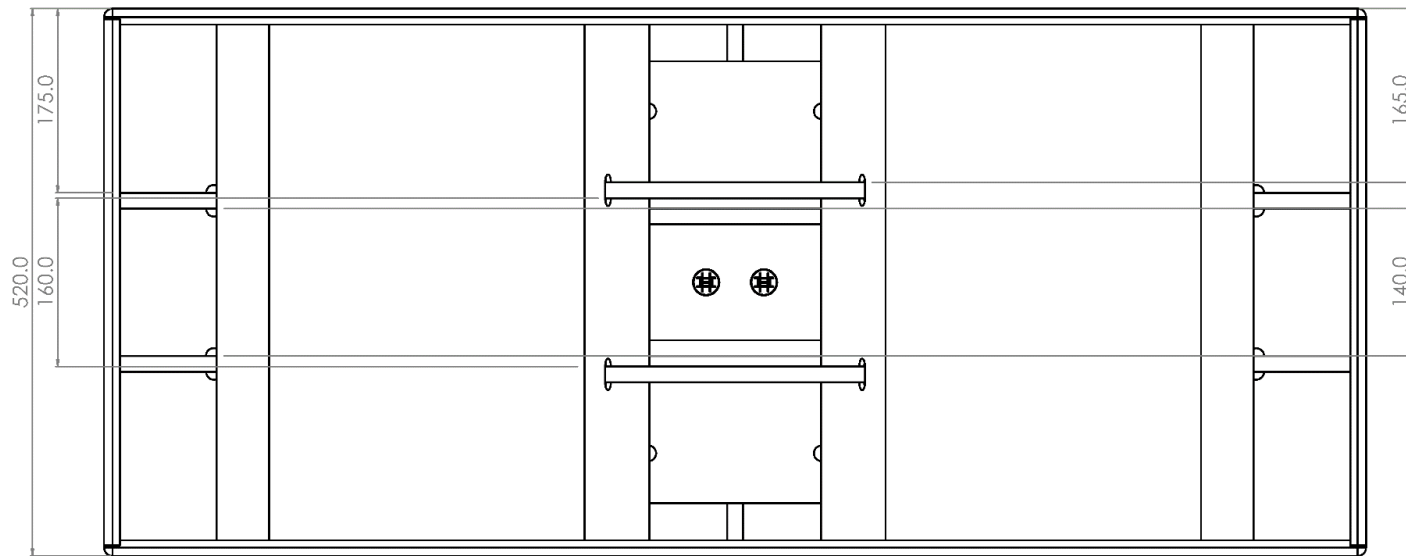
ENCLOSURE DESIGN – TOP VIEW



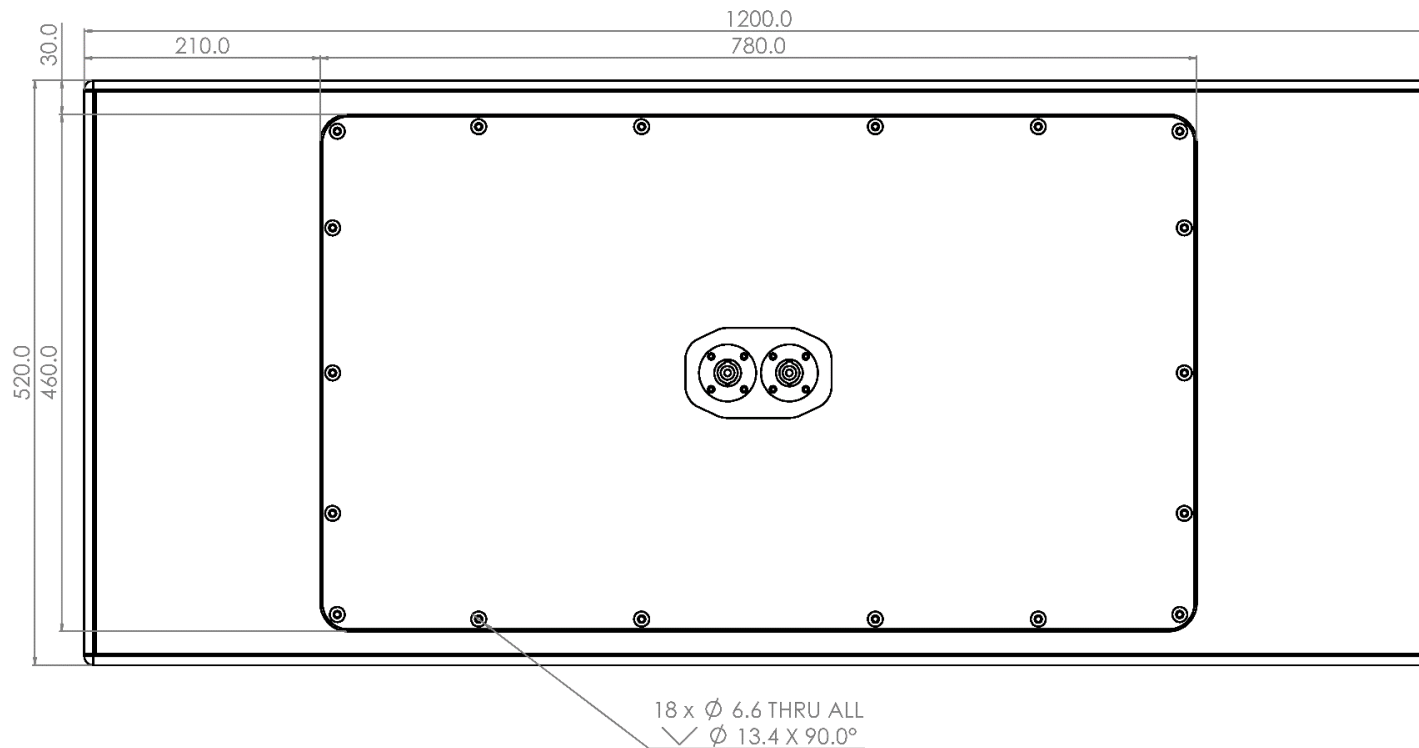
ENCLOSURE DESIGN – TOP VIEW



ENCLOSURE DESIGN – FRONT VIEW



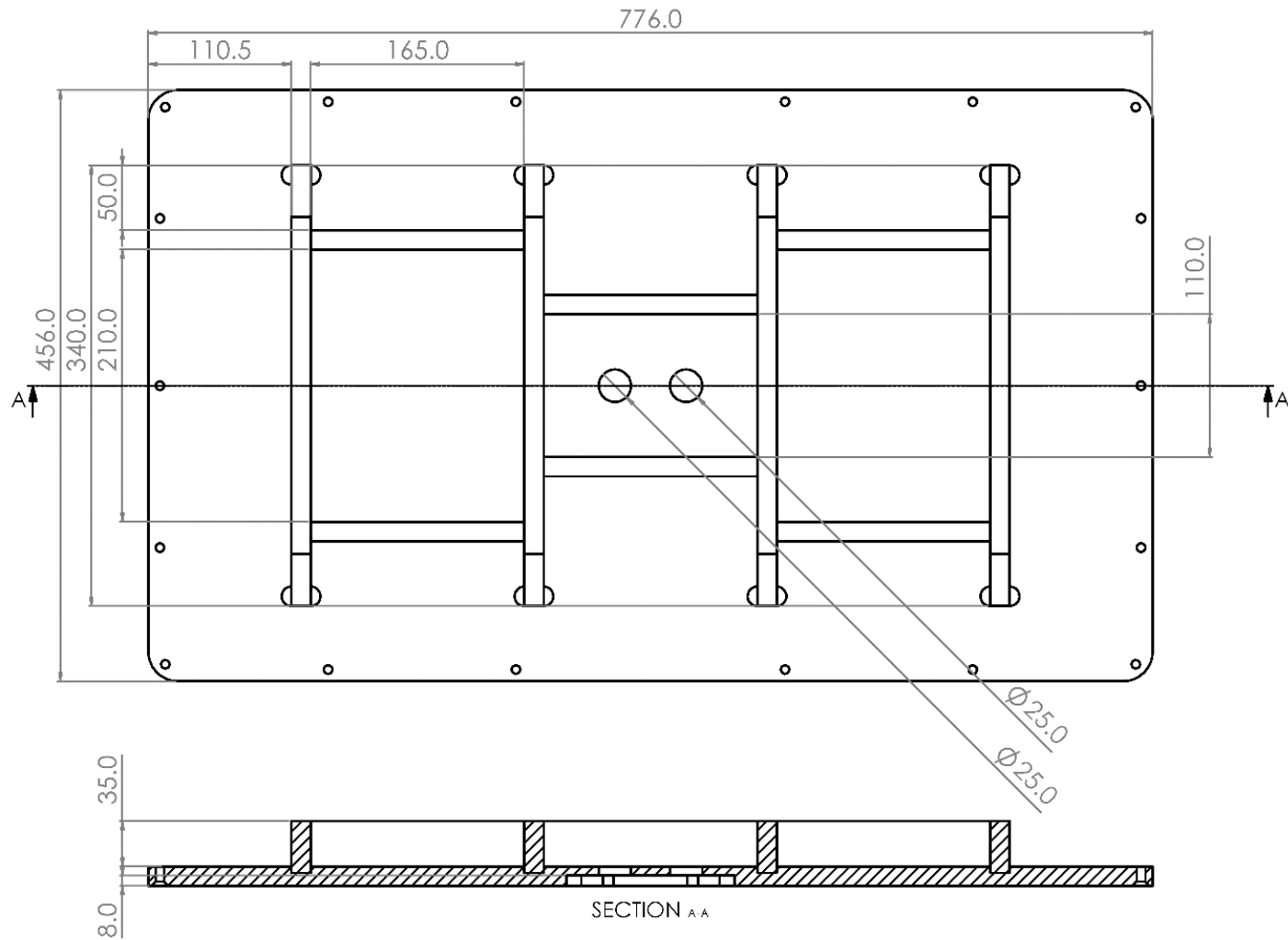
ENCLOSURE DESIGN – BACK VIEW



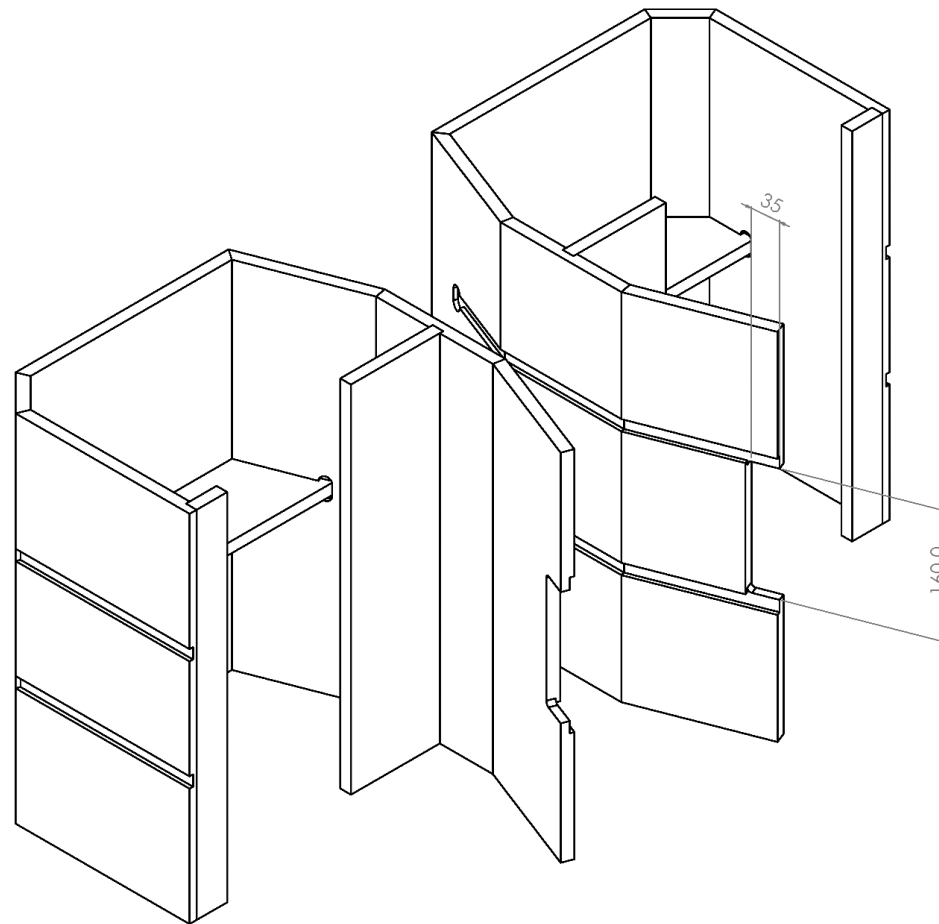
Access panel dimensions are MANDATORY

www.bcspeakers.com - Suggested designs

ENCLOSURE DESIGN – ACCESS PANEL



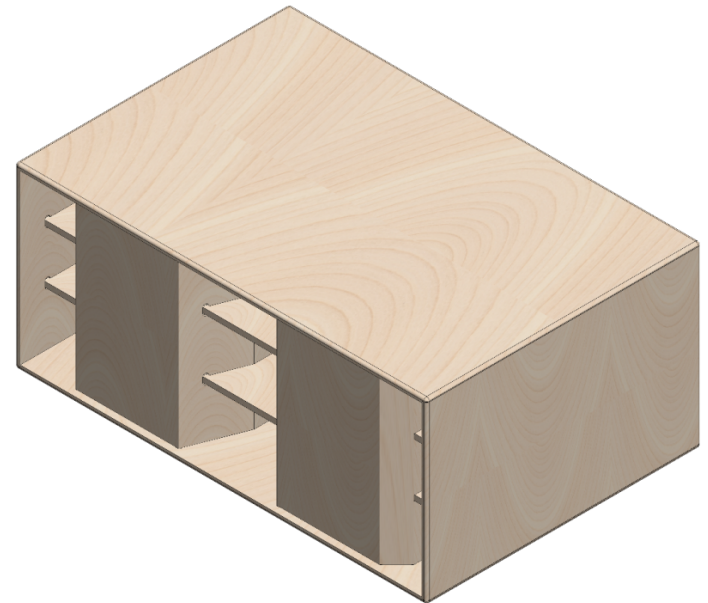
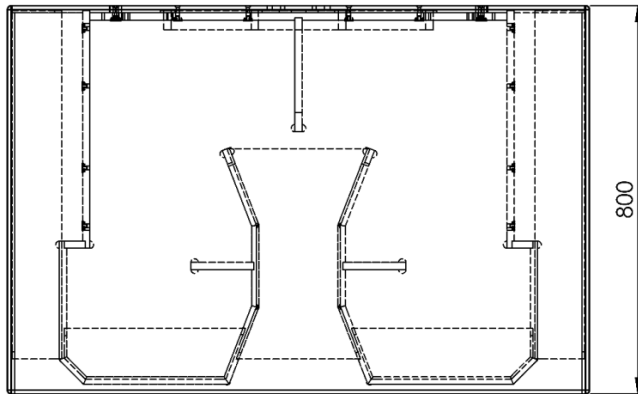
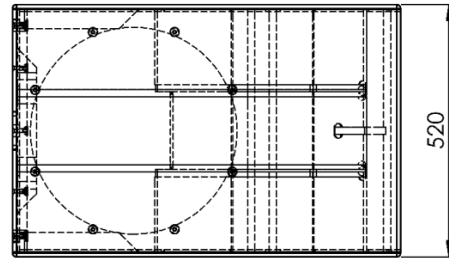
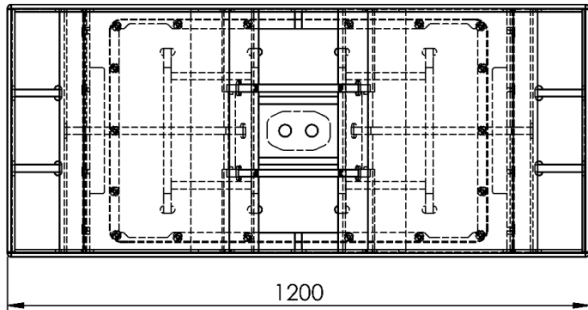
ENCLOSURE DESIGN – MID PORT



Port panel opening is MANDATORY

www.bcspeakers.com - Suggested designs

BLUEPRINTS – From page 18 to page 40

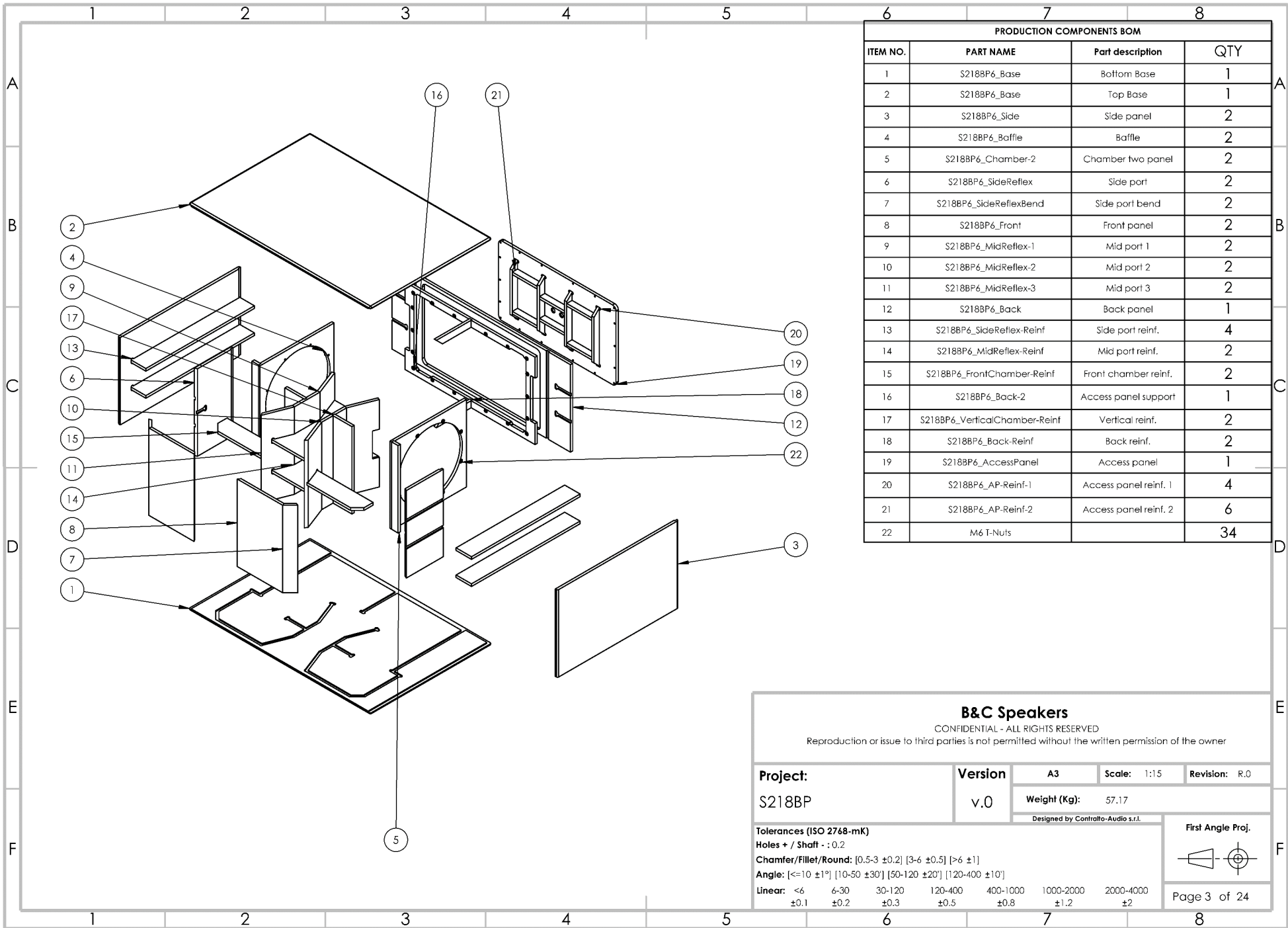


B&C Speakers

CONFIDENTIAL - ALL RIGHTS RESERVED

Reproduction or issue to third parties is not permitted without the written permission of the owner

Project: S218BP	Version v.0	A3	Scale: 1:10	Revision: R.0		
		Weight (Kg): 57.17		<small>Designed by Contralto-Audio s.r.l.</small>		
Tolerances (ISO 2768-mK)						
Holes + / Shaft - : 0.2						
Chamfer/Fillet/Round: [0.5-3 ±0.2] [3-6 ±0.5] [>6 ±1]						
Angle: [<=10 ±1°] [10-50 ±30] [50-120 ±20] [120-400 ±10°]						
Linear:						
<6 ±0.1	6-30 ±0.2	30-120 ±0.3	120-400 ±0.5	400-1000 ±0.8	1000-2000 ±1.2	2000-4000 ±2
				First Angle Proj. 		
Page 2 of 24						

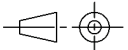


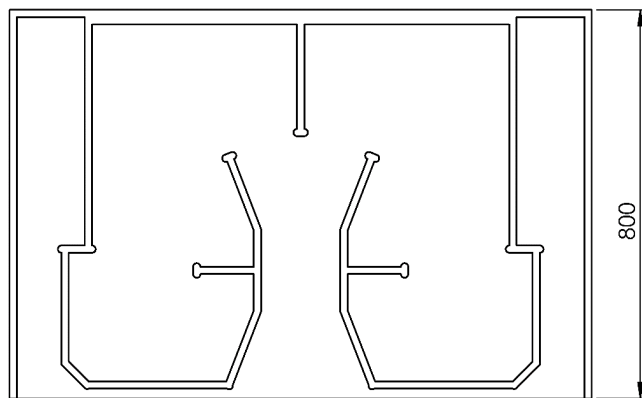
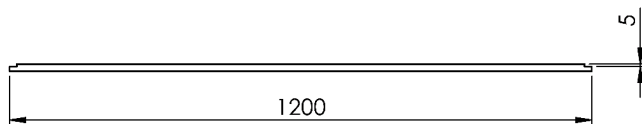
PRODUCTION COMPONENTS BOM			
ITEM NO.	PART NAME	Part description	QTY
1	S218BP6_Base	Bottom Base	1
2	S218BP6_Base	Top Base	1
3	S218BP6_Side	Side panel	2
4	S218BP6_Baffle	Baffle	2
5	S218BP6_Chamber-2	Chamber two panel	2
6	S218BP6_SideReflex	Side port	2
7	S218BP6_SideReflexBend	Side port bend	2
8	S218BP6_Front	Front panel	2
9	S218BP6_MidReflex-1	Mid port 1	2
10	S218BP6_MidReflex-2	Mid port 2	2
11	S218BP6_MidReflex-3	Mid port 3	2
12	S218BP6_Back	Back panel	1
13	S218BP6_SideReflex-Reinf	Side port reinf.	4
14	S218BP6_MidReflex-Reinf	Mid port reinf.	2
15	S218BP6_FrontChamber-Reinf	Front chamber reinf.	2
16	S218BP6_Back-2	Access panel support	1
17	S218BP6_VerticalChamber-Reinf	Vertical reinf.	2
18	S218BP6_Back-Reinf	Back reinf.	2
19	S218BP6_AccessPanel	Access panel	1
20	S218BP6_AP-Reinf-1	Access panel reinf. 1	4
21	S218BP6_AP-Reinf-2	Access panel reinf. 2	6
22	M6 T-Nuts		34

B&C Speakers
 CONFIDENTIAL - ALL RIGHTS RESERVED
 Reproduction or issue to third parties is not permitted without the written permission of the owner

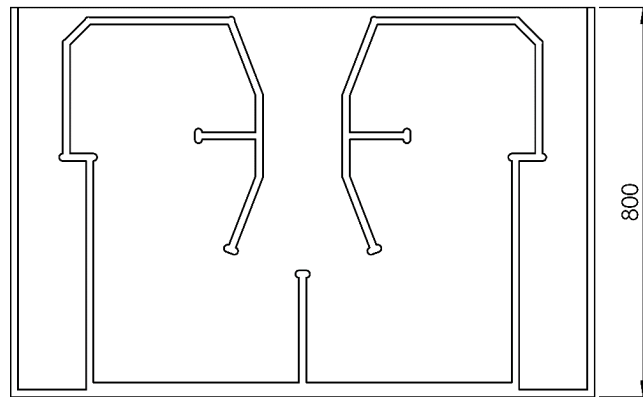
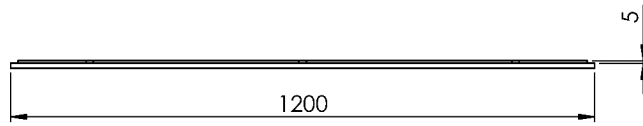
Project: S218BP	Version: v.0	A3	Scale: 1:15	Revision: R.0
		Weight (Kg): 57.17		
<small>Designed by Contralto-Audio s.r.l.</small>				

Tolerances (ISO 2768-mK)
 Holes + / Shaft - : 0.2
 Chamfer/Fillet/Round: [0.5-3 ±0.2] [3-6 ±0.5] [≥6 ±1]
 Angle: [≤10 ±1°] [10-50 ±30'] [50-120 ±20°] [120-400 ±10°]
 Linear: <6 ±0.1 6-30 ±0.2 30-120 ±0.3 120-400 ±0.5 400-1000 ±0.8 1000-2000 ±1.2 2000-4000 ±2

First Angle Proj.

 Page 3 of 24



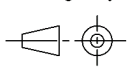
B&C Speakers CONFIDENTIAL - ALL RIGHTS RESERVED Reproduction or issue to third parties is not permitted without the written permission of the owner						
Project: S218BP	Version: v.0	A3	Scale: 1:10	Revision: R.0		
Part name: S218BP6_Base		Weight (Kg): 9.83	Volume (L): 13.84			
Part description: Bottom Base		Material: Birch Plywood 15mm		<i>Designed by Controllo-Audio s.r.l.</i>		
Tolerances (ISO 2768-mK)						
Holes + / Shaft - : 0.2						
Chamfer/Fillet/Round: [0.5-3 ±0.2] [3-6 ±0.5] [>6 ±1]						
Angle: [<=10 ±1°] [10-50 ±30°] [50-120 ±20°] [120-400 ±10°]						
Linear:	<6 ±0.1	6-30 ±0.2	30-120 ±0.3	120-400 ±0.5	400-1000 ±0.8	1000-2000 ±1.2
					2000-4000 ±2	
						First Angle Proj.
						Page 4 of 24

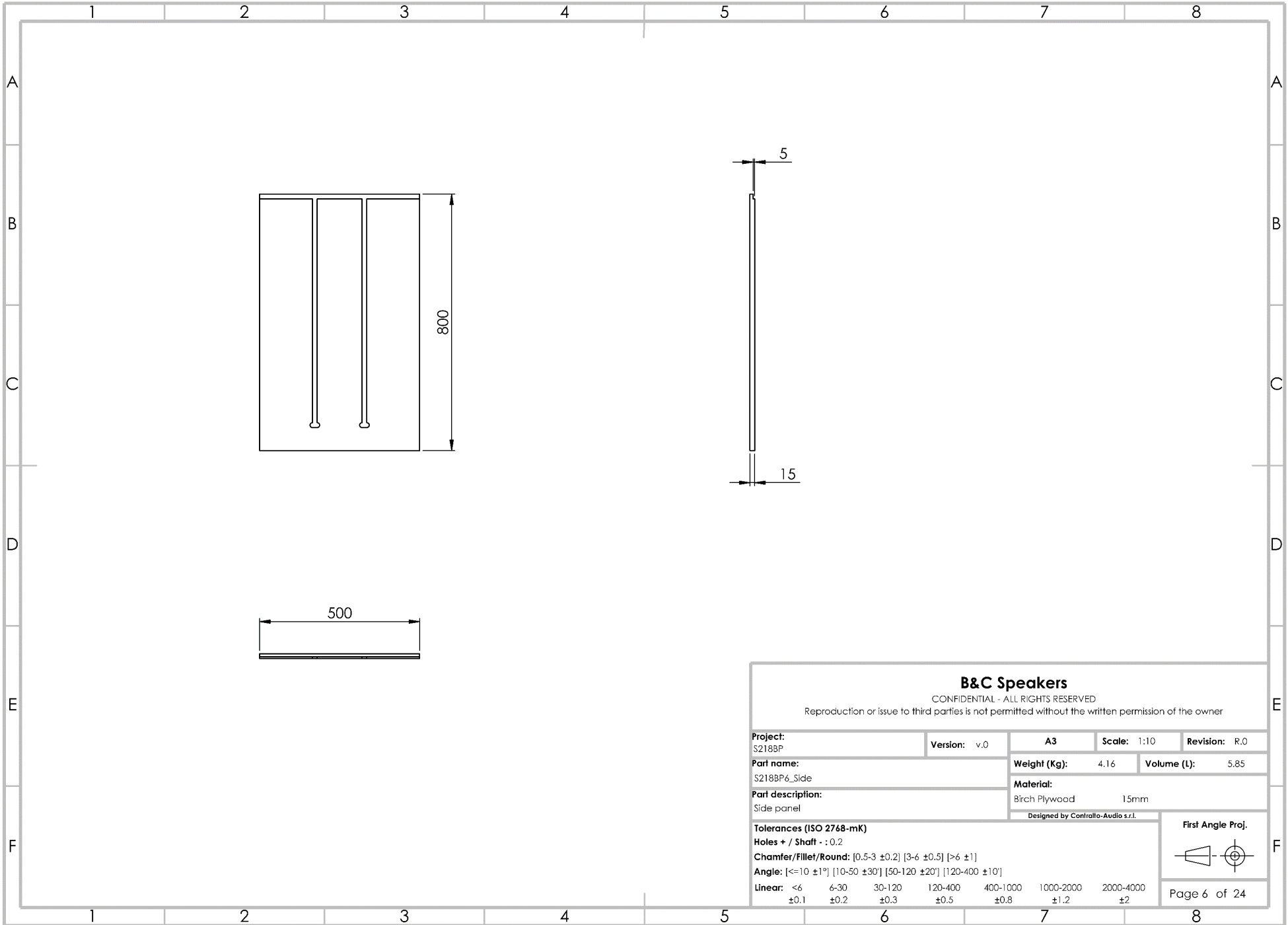


B&C Speakers

CONFIDENTIAL - ALL RIGHTS RESERVED

Reproduction or issue to third parties is not permitted without the written permission of the owner

Project: S218BP	Version: v.0	A3	Scale: 1:10	Revision: R.0			
Part name: S218BP6_Base		Weight (Kg): 9.83	Volume (L): 13.84				
Part description: Top Base		Material: Birch Plywood 15mm					
<small>Designed by Contralto-Audio s.r.l.</small>							
Tolerances (ISO 2768-mK)							
Holes + / Shaft - : 0.2							
Chamfer/Fillet/Round: [0.5-3 ±0.2] [3-6 ±0.5] [>6 ±1]							
Angle: [<=10 ±1°] [10-50 ±30°] [50-120 ±20°] [120-400 ±10°]							
Linear:	<6 ±0.1	6-30 ±0.2	30-120 ±0.3	120-400 ±0.5	400-1000 ±0.8	1000-2000 ±1.2	2000-4000 ±2
First Angle Proj.							
							
Page 5 of 24							



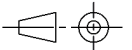
B&C Speakers

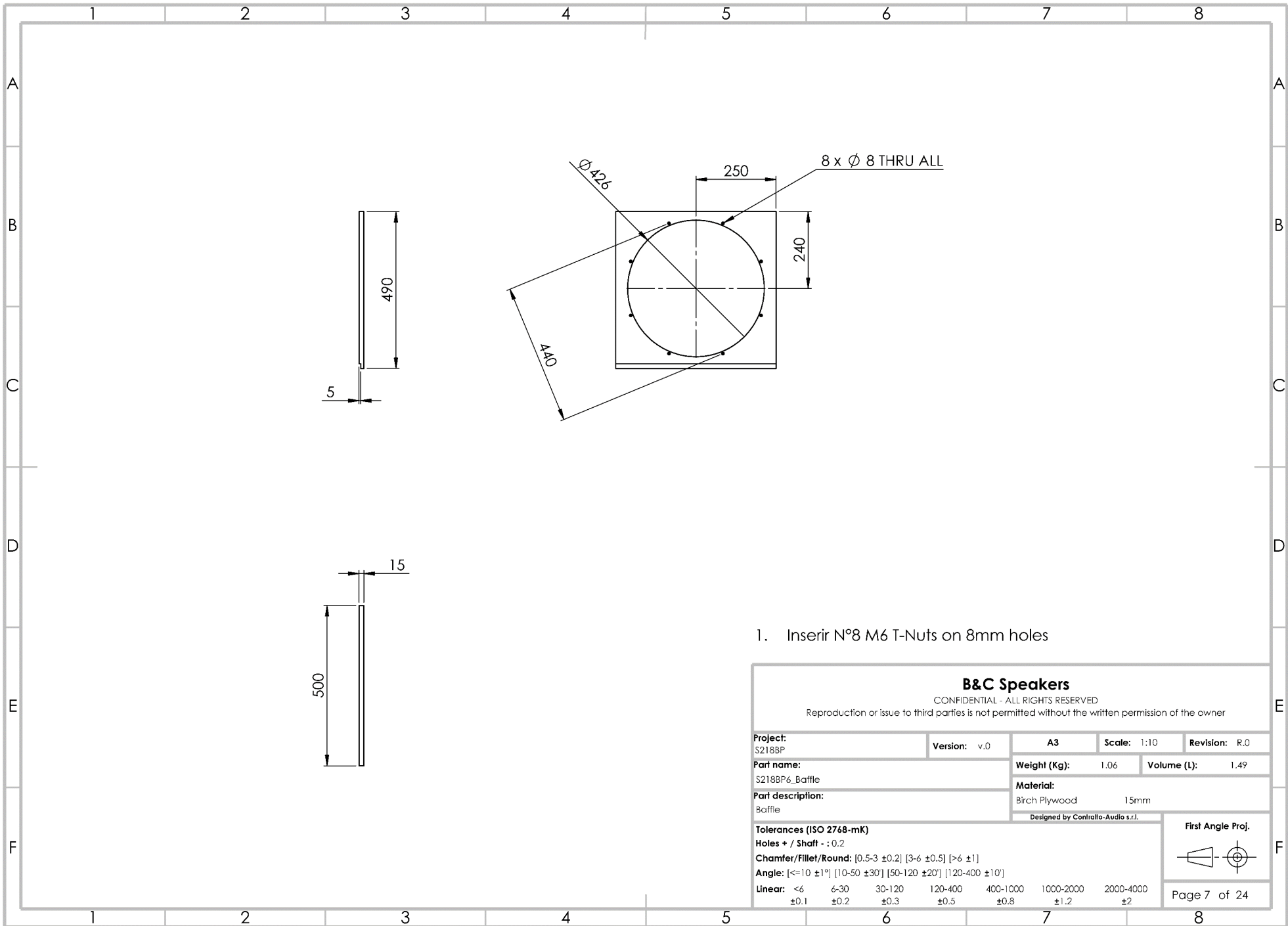
CONFIDENTIAL - ALL RIGHTS RESERVED

Reproduction or issue to third parties is not permitted without the written permission of the owner

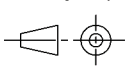
Project: S2188P		Version: v.0	A3	Scale: 1:10	Revision: R.0
Part name: S2188P6_Side		Weight (Kg): 4.16		Volume (L): 5.85	
Part description: Side panel		Material: Birch Plywood 15mm			
<small>Designed by Controllo-Audio s.r.l.</small>					
Tolerances (ISO 2768-mK)					
Holes + / Shaft - : 0.2					
Chamfer/Fillet/Round: [0.5-3 ±0.2] [3-6 ±0.5] [>6 ±1]					
Angle: [<=10 ±1°] [10-50 ±30'] [50-120 ±20'] [120-400 ±10']					
Linear: <6	6-30	30-120	120-400	400-1000	1000-2000
±0.1	±0.2	±0.3	±0.5	±0.8	±1.2
					2000-4000
					±2

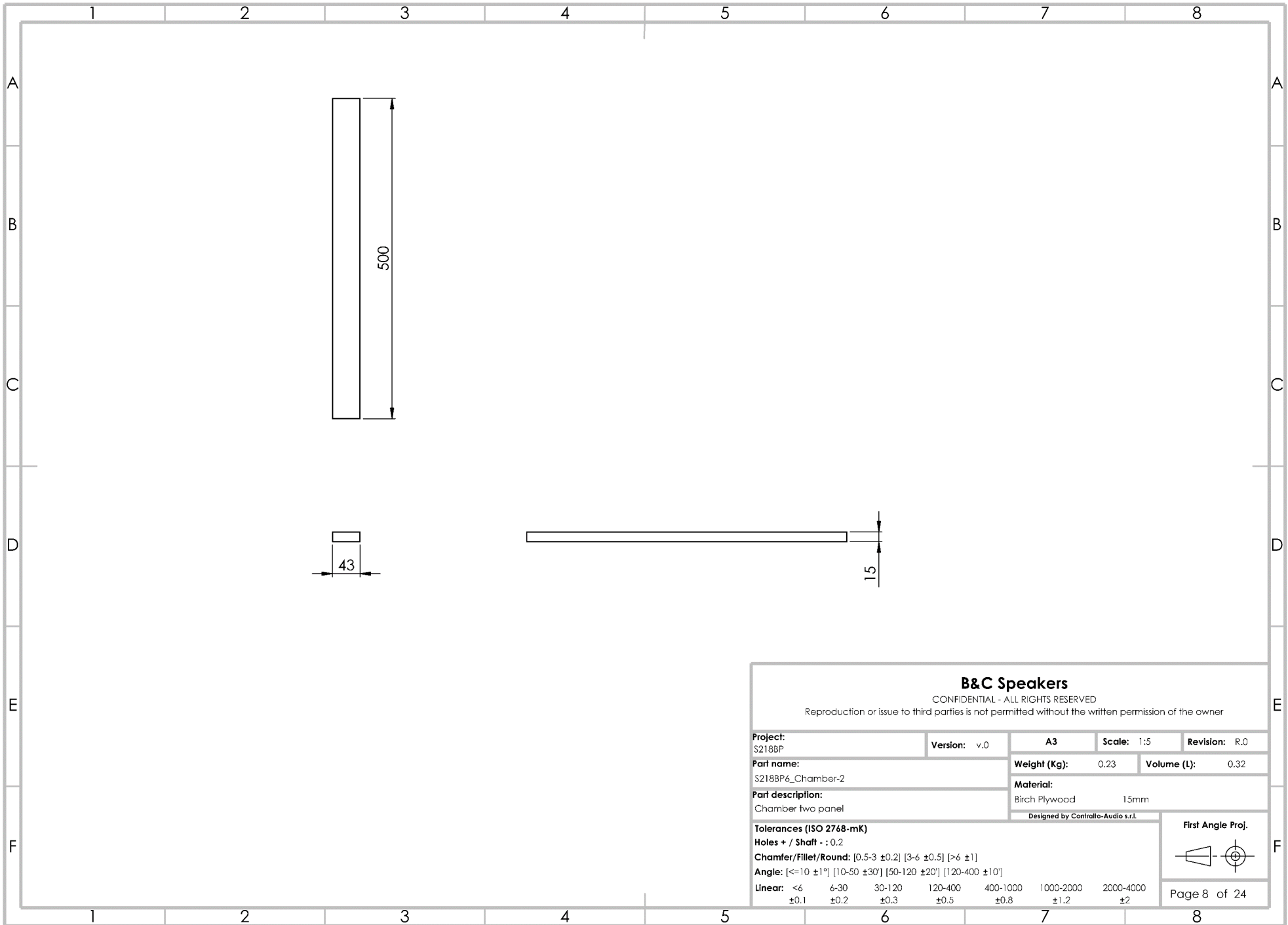
First Angle Proj.





1. Insirir N°8 M6 T-Nuts on 8mm holes

B&C Speakers							
CONFIDENTIAL - ALL RIGHTS RESERVED							
Reproduction or issue to third parties is not permitted without the written permission of the owner							
Project: S218BP	Version: v.0	A3	Scale: 1:10	Revision: R.0			
Part name: S218BP6_Baffle		Weight (Kg): 1.06	Volume (L): 1.49				
Part description: Baffle		Material: Birch Plywood 15mm					
		<small>Designed by Contralto-Audio s.r.l.</small>					
Tolerances (ISO 2768-mK)							
Holes + / Shaft - : 0.2							
Chamfer/Fillet/Round: [0.5-3 ±0.2] [3-6 ±0.5] [>6 ±1]							
Angle: [<=10 ±1°] [10-50 ±30°] [50-120 ±20°] [120-400 ±10°]							
Linear:	<6 ±0.1	6-30 ±0.2	30-120 ±0.3	120-400 ±0.5	400-1000 ±0.8	1000-2000 ±1.2	2000-4000 ±2
First Angle Proj.							
							
Page 7 of 24							

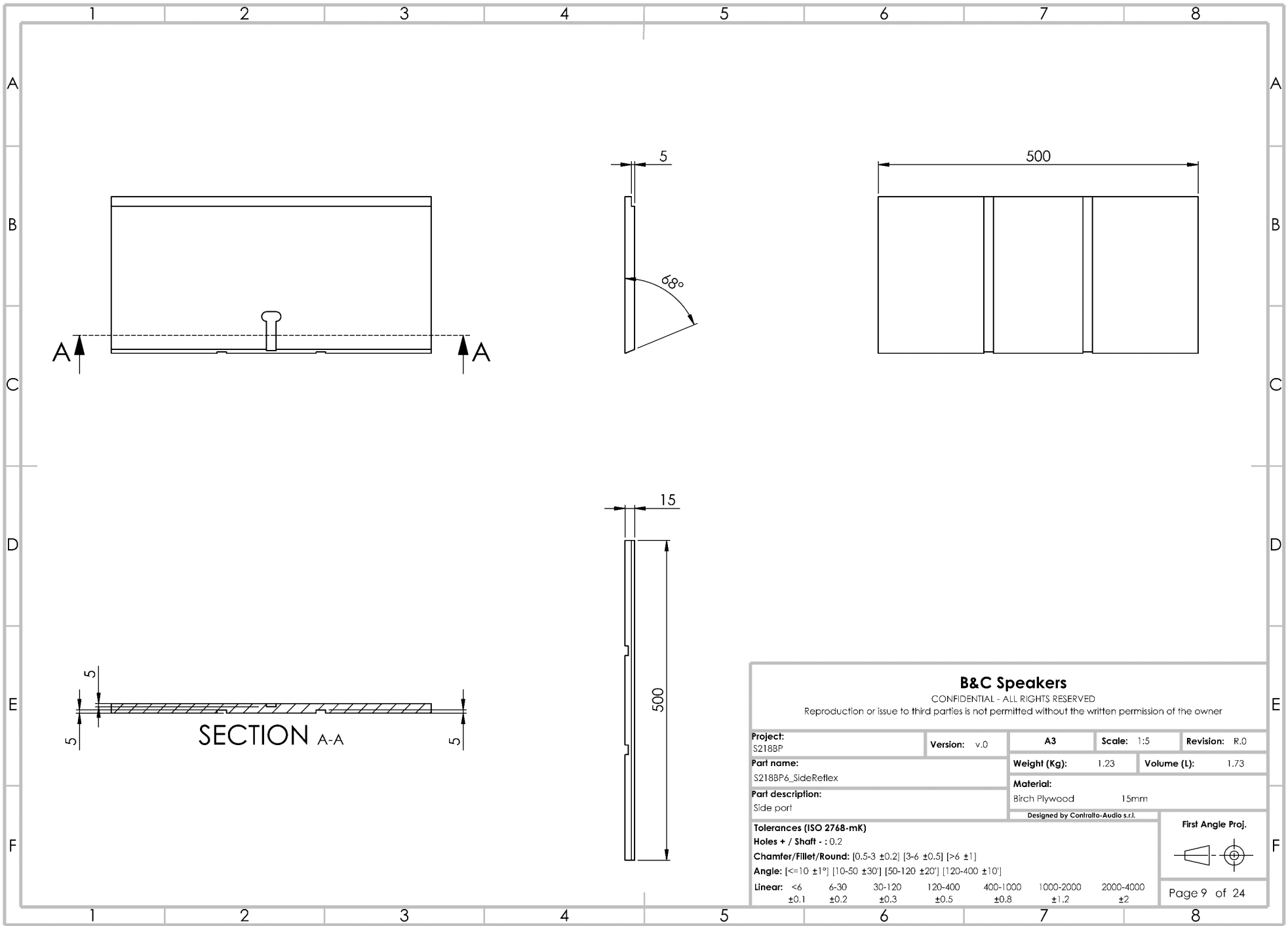


B&C Speakers

CONFIDENTIAL - ALL RIGHTS RESERVED

Reproduction or issue to third parties is not permitted without the written permission of the owner

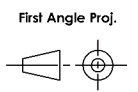
Project: S218BP	Version: v.0	A3	Scale: 1:5	Revision: R.0			
Part name: S218BP6_Chamber-2		Weight (Kg): 0.23	Volume (L): 0.32				
Part description: Chamber two panel		Material: Birch Plywood 15mm					
<small>Designed by Controllo-Audio s.r.l.</small>							
Tolerances (ISO 2768-mK)							
Holes + / Shaft - : 0.2							
Chamfer/Fillet/Round: [0.5-3 ±0.2] [3-6 ±0.5] [>6 ±1]							
Angle: [<=10 ±1°] [10-50 ±30°] [50-120 ±20°] [120-400 ±10°]							
Linear:	<6 ±0.1	6-30 ±0.2	30-120 ±0.3	120-400 ±0.5	400-1000 ±0.8	1000-2000 ±1.2	2000-4000 ±2
First Angle Proj.							
Page 8 of 24							

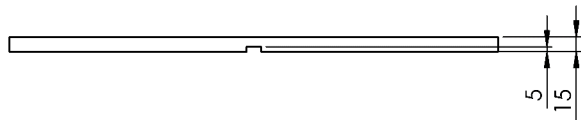
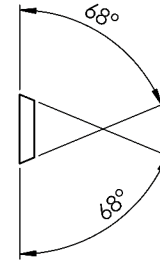
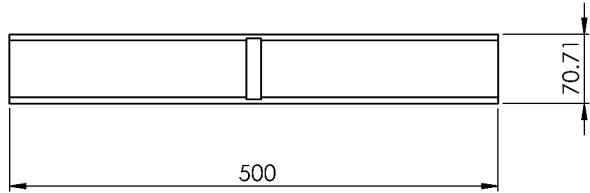


B&C Speakers

CONFIDENTIAL - ALL RIGHTS RESERVED
 Reproduction or issue to third parties is not permitted without the written permission of the owner

Project: S218BP	Version: v.0	A3	Scale: 1:5	Revision: R.0
Part name: S218BP6_SideReflex		Weight (Kg): 1.23	Volume (L): 1.73	
Part description: Side port		Material: Birch Plywood 15mm		
Tolerances (ISO 2768-mK)		<small>Designed by Control-Audio s.r.l.</small>		
Holes + / Shaft - : 0.2				
Chamfer/Fillet/Round: [0.5-3 ±0.2] [3-6 ±0.5] [>6 ±1]				
Angle: [<=10 ±1°] [10-50 ±30°] [50-120 ±20°] [120-400 ±10°]				
Linear:	<6 ±0.1	6-30 ±0.2	30-120 ±0.3	120-400 ±0.5
			400-1000 ±0.8	1000-2000 ±1.2
				2000-4000 ±2



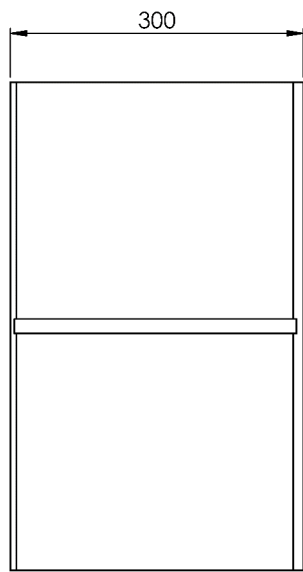
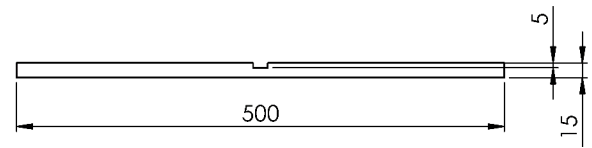
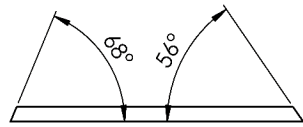


B&C Speakers

CONFIDENTIAL - ALL RIGHTS RESERVED

Reproduction or issue to third parties is not permitted without the written permission of the owner

Project: S218BP		Version: v.0	A3	Scale: 1:5	Revision: R.0
Part name: S218BP6_SideReflexBend		Weight (Kg): 0.34	Volume (L): 0.48		
Part description: Side port bend		Material: Birch Plywood 15mm			
<small>Designed by Controllo-Audio s.r.l.</small>					
Tolerances (ISO 2768-mK)					
Holes + / Shaft - : 0.2					
Chamfer/Fillet/Round: [0,5-3 ±0.2] [3-6 ±0.5] [>6 ±1]					
Angle: [<=10 ±1°] [10-50 ±30°] [50-120 ±20°] [120-400 ±10°]					
Linear:	<6 ±0.1	6-30 ±0.2	30-120 ±0.3	120-400 ±0.5	400-1000 ±0.8
				1000-2000 ±1.2	2000-4000 ±2
					First Angle Proj.
					Page 10 of 24



B&C Speakers
 CONFIDENTIAL - ALL RIGHTS RESERVED
 Reproduction or issue to third parties is not permitted without the written permission of the owner

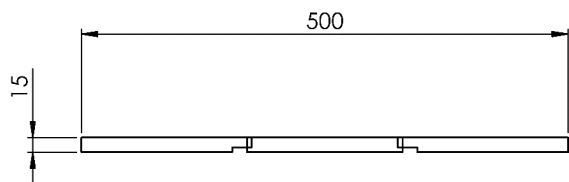
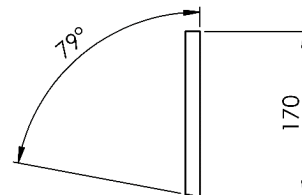
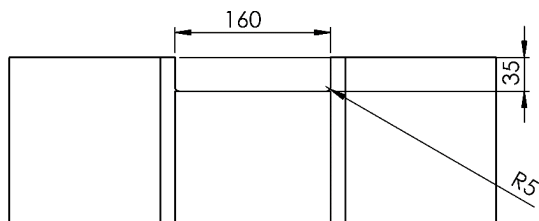
Project: S2188P	Version: v.0	A3	Scale: 1:5	Revision: R.0
Part name: S218BP6_Front		Weight (Kg): 1,54	Volume (L): 2,17	
Part description: Front panel		Material: Birch Plywood 15mm		
Designed by Contralto-Audio s.r.l.				

Tolerances (ISO 2768-mK)
Holes + / Shaft - : 0.2
Chamfer/Fillet/Round: [0.5-3 ±0.2] [3-6 ±0.5] [>6 ±1]
Angle: [<=10 ±1°] [10-50 ±30°] [50-120 ±20°] [120-400 ±10°]
Linear:

<6	6-30	30-120	120-400	400-1000	1000-2000	2000-4000
±0.1	±0.2	±0.3	±0.5	±0.8	±1.2	±2

First Angle Proj.

Page 11 of 24



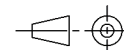
B&C Speakers

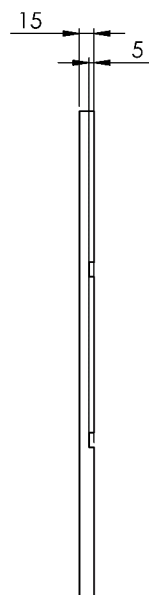
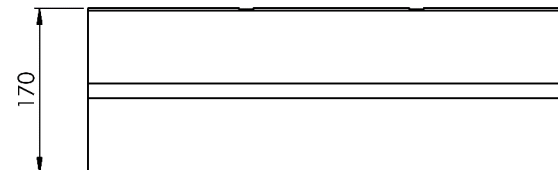
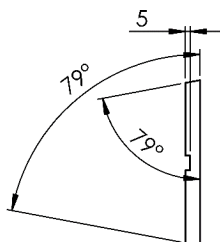
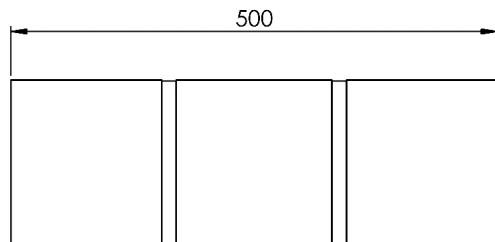
CONFIDENTIAL - ALL RIGHTS RESERVED

Reproduction or issue to third parties is not permitted without the written permission of the owner

Project: S218BP	Version: v.0	A3	Scale: 1:5	Revision: R.0
Part name: S218BP6_MidReflex-1		Weight (Kg): 0.82	Volume (L): 1.16	
Part description: Mid part 1		Material: Birch Plywood 15mm		
<small>Designed by Contralto-Audio s.r.l.</small>				
Tolerances (ISO 2768-mK)				
Holes + / Shaft - : 0.2				
Chamfer/Fillet/Round: [0,5-3 ±0,2] [3-6 ±0,5] [>6 ±1]				
Angle: [<=10 ±1°] [10-50 ±30°] [50-120 ±20°] [120-400 ±10°]				
Linear:	<6 ±0.1	6-30 ±0.2	30-120 ±0.3	120-400 ±0.5
			400-1000 ±0.8	1000-2000 ±1.2
				2000-4000 ±2

First Angle Proj.





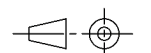
B&C Speakers

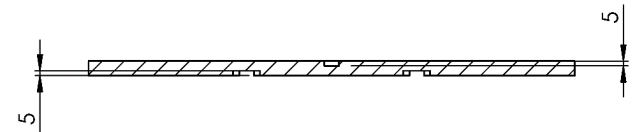
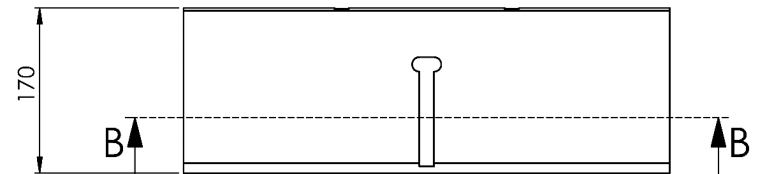
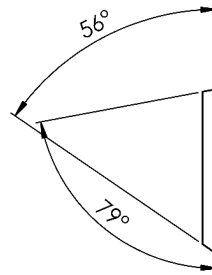
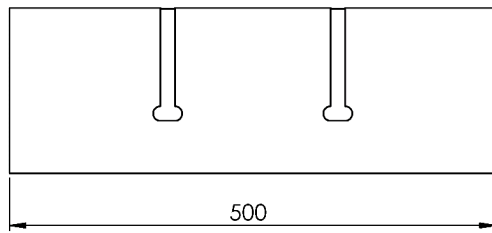
CONFIDENTIAL - ALL RIGHTS RESERVED

Reproduction or issue to third parties is not permitted without the written permission of the owner

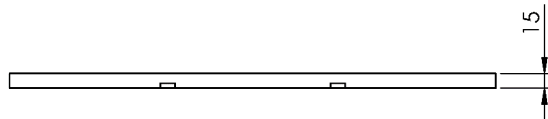
Project: S2188P	Version: v.0	A3	Scale: 1:5	Revision: R.0
Part name: S2188P6_MidReflex-2		Weight (Kg): 0.85	Volume (L): 1.19	
Part description: Mid port 2		Material: Birch Plywood 15mm		
Tolerances (ISO 2768-mK)		<small>Designed by Contralto-Audio s.r.l.</small>		
Holes + / Shaft - : 0.2				
Chamfer/Fillet/Round: [0.5-3 ±0.2] [3-6 ±0.5] [>6 ±1]				
Angle: [<=10 ±1°] [10-50 ±30°] [50-120 ±20°] [120-400 ±10°]				
Linear:	<6 ±0.1	6-30 ±0.2	30-120 ±0.3	120-400 ±0.5
			400-1000 ±0.8	1000-2000 ±1.2
				2000-4000 ±2

First Angle Proj.





SECTION B-B

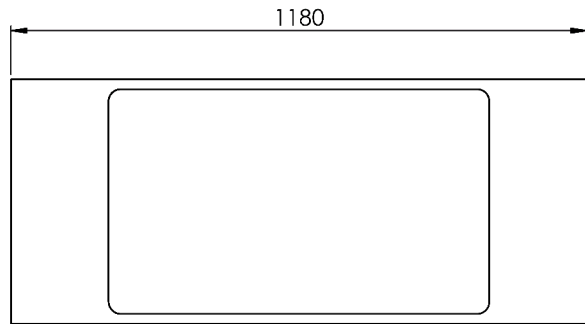
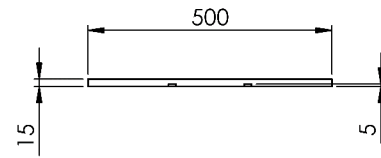
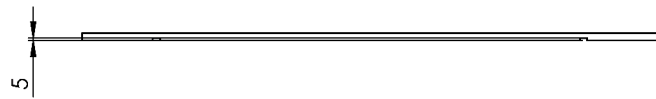
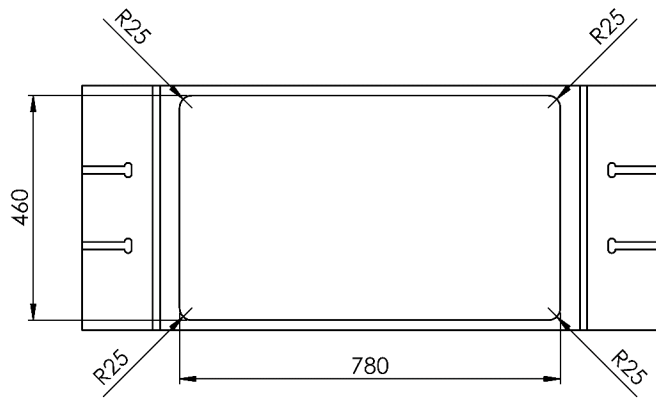


B&C Speakers

CONFIDENTIAL - ALL RIGHTS RESERVED

Reproduction or issue to third parties is not permitted without the written permission of the owner

Project: S218BP	Version: v.0	A3	Scale: 1:5	Revision: R.0
Part name: S218BP6_MidReflex-3		Weight (Kg): 0.85	Volume (L): 1.20	
Part description: Mid part 3		Material: Birch Plywood 15mm		
<i>Designed by Contralto-Audio s.r.l.</i>				
Tolerances (ISO 2768-mK)				
Holes + / Shaft - : 0.2				
Chamfer/Fillet/Round: [0.5-3 ±0.2] [3-6 ±0.5] [>6 ±1]				
Angle: [<=10 ±1°] [10-50 ±30°] [50-120 ±20°] [120-400 ±10°]				
Linear: <6 ±0.1	6-30 ±0.2	30-120 ±0.3	120-400 ±0.5	400-1000 ±0.8
			1000-2000 ±1.2	2000-4000 ±2
				<p>First Angle Proj.</p>
				Page 14 of 24



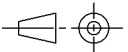
B&C Speakers

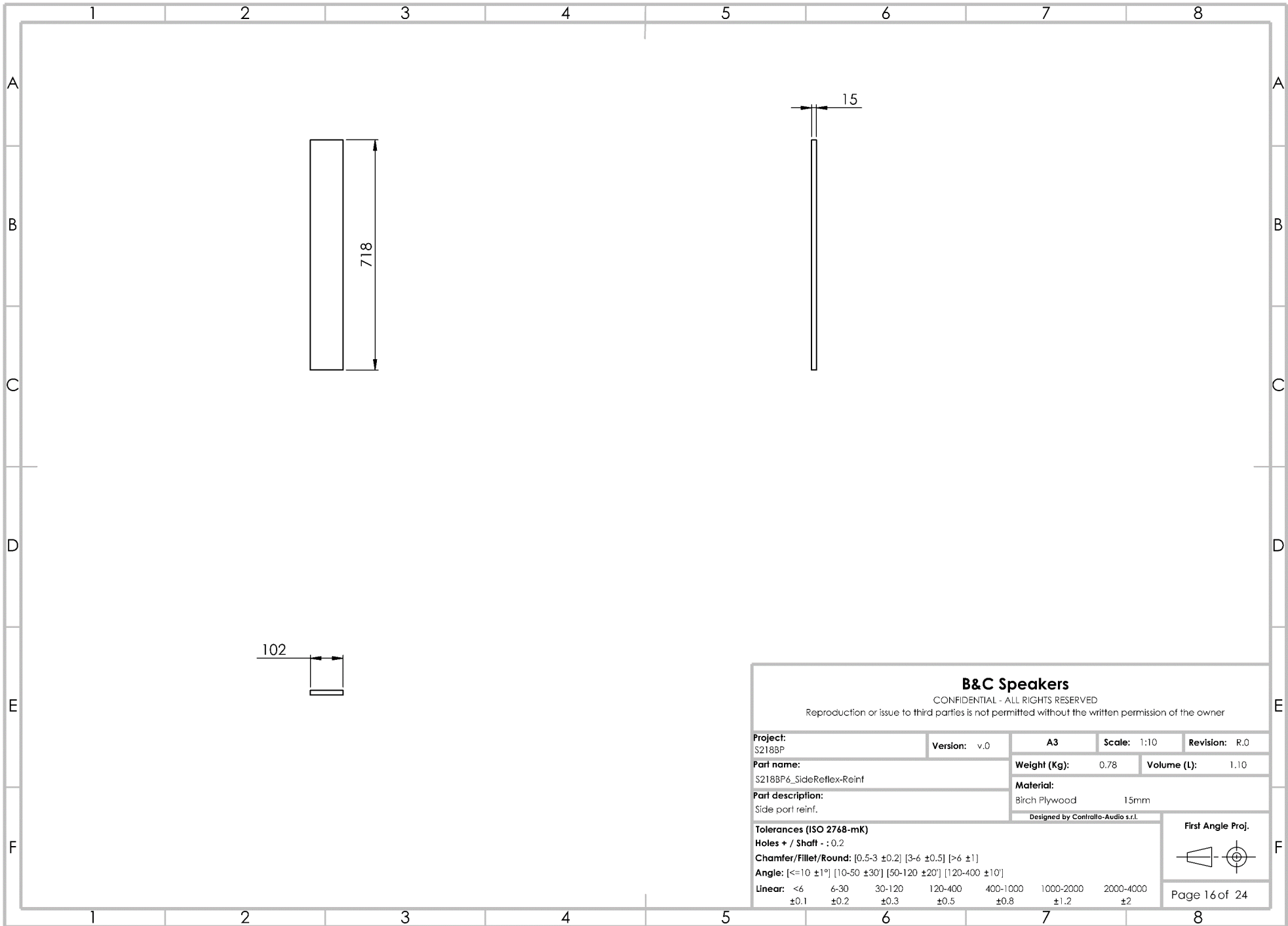
CONFIDENTIAL - ALL RIGHTS RESERVED

Reproduction or issue to third parties is not permitted without the written permission of the owner

Project: S218BP	Version: v.0	A3	Scale: 1:10	Revision: R.0
Part name: S218BP6_Back		Weight (Kg): 2.39	Volume (L): 3.37	
Part description: Back panel		Material: Birch Plywood 15mm		
Tolerances (ISO 2768-mK)		Designed by Contralto-Audio s.r.l.		
Holes + / Shaft - : 0.2				
Chamfer/Fillet/Round: [0.5-3 ±0.2] [3-6 ±0.5] [>6 ±1]				
Angle: [<=10 ±1°] [10-50 ±30°] [50-120 ±20°] [120-400 ±10°]				
Linear: <6 ±0.1	6-30 ±0.2	30-120 ±0.3	120-400 ±0.5	400-1000 ±0.8
			1000-2000 ±1.2	2000-4000 ±2

First Angle Proj.



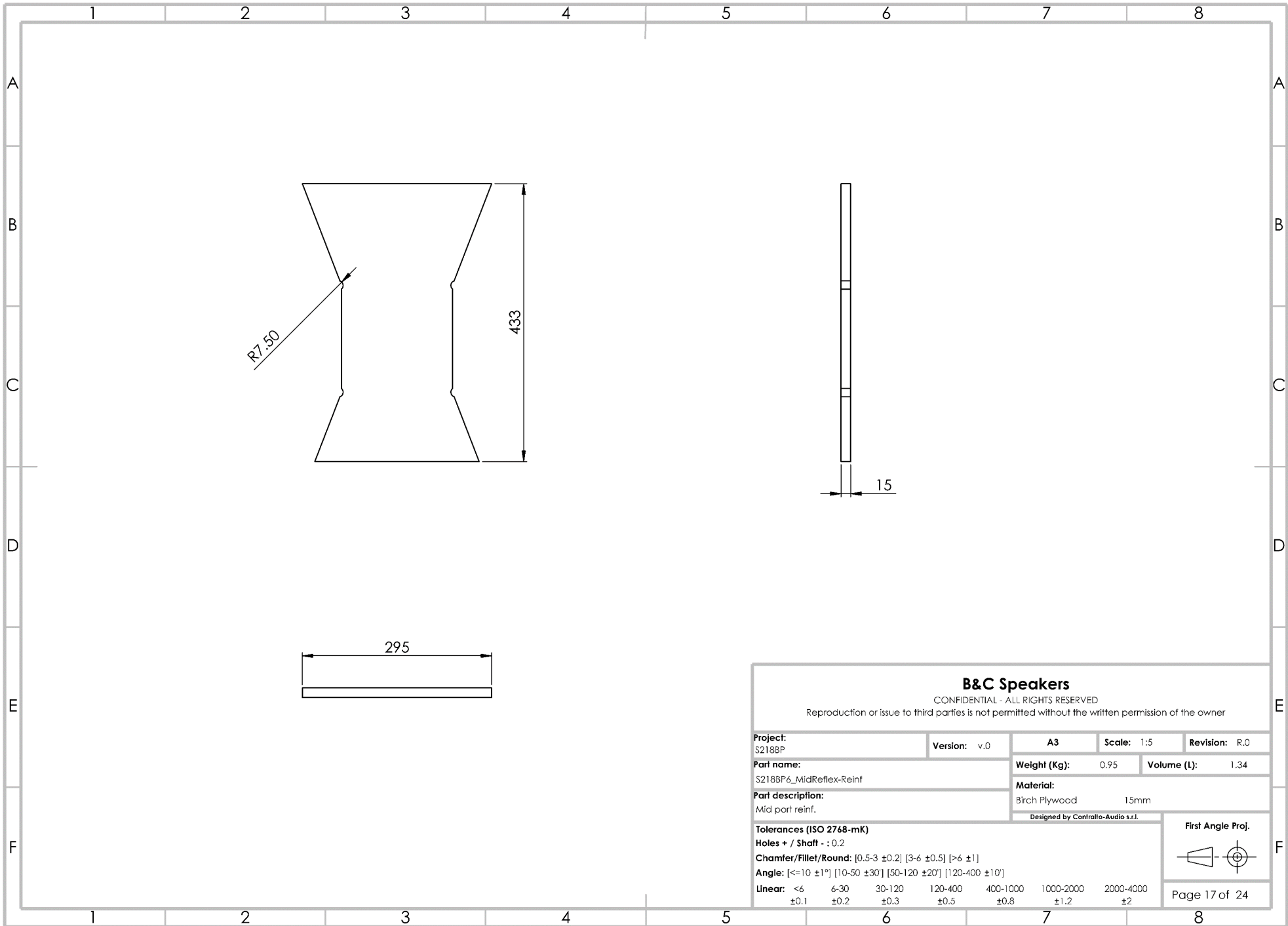


B&C Speakers

CONFIDENTIAL - ALL RIGHTS RESERVED

Reproduction or issue to third parties is not permitted without the written permission of the owner

Project: S2188P	Version: v.0	A3	Scale: 1:10	Revision: R.0
Part name: S2188P6_SideReflex-Reinf		Weight (Kg): 0.78	Volume (L): 1.10	
Part description: Side port reinf.		Material: Birch Plywood 15mm		
Tolerances (ISO 2768-mK)				First Angle Proj.
Holes + / Shaft - : 0.2				
Chamfer/Fillet/Round: [0.5-3 ±0.2] [3-6 ±0.5] [>6 ±1]				
Angle: [<=10 ±1°] [10-50 ±30°] [50-120 ±20°] [120-400 ±10°]				
Linear:	<6 ±0.1	6-30 ±0.2	30-120 ±0.3	120-400 ±0.5
			400-1000 ±0.8	1000-2000 ±1.2
				2000-4000 ±2

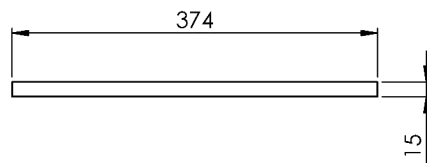
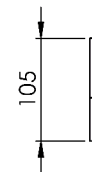
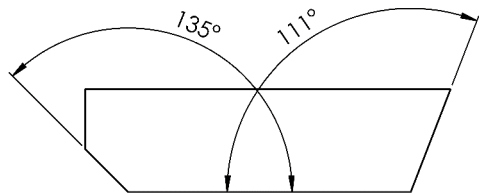


B&C Speakers

CONFIDENTIAL - ALL RIGHTS RESERVED

Reproduction or issue to third parties is not permitted without the written permission of the owner

Project: S218BP	Version: v.0	A3	Scale: 1:5	Revision: R.0			
Part name: S218BP6_MidReflex-Reint		Weight (Kg): 0.95	Volume (L): 1.34				
Part description: Mid part reinf.		Material: Birch Plywood 15mm					
Tolerances (ISO 2768-mK)				First Angle Proj. 			
Holes + / Shaft - : 0.2							
Chamfer/Fillet/Round: [0.5-3 ±0.2] [3-6 ±0.5] [>6 ±1]							
Angle: [<=10 ±1°] [10-50 ±30°] [50-120 ±20°] [120-400 ±10°]							
Linear:	<6 ±0.1	6-30 ±0.2	30-120 ±0.3	120-400 ±0.5	400-1000 ±0.8	1000-2000 ±1.2	2000-4000 ±2



B&C Speakers

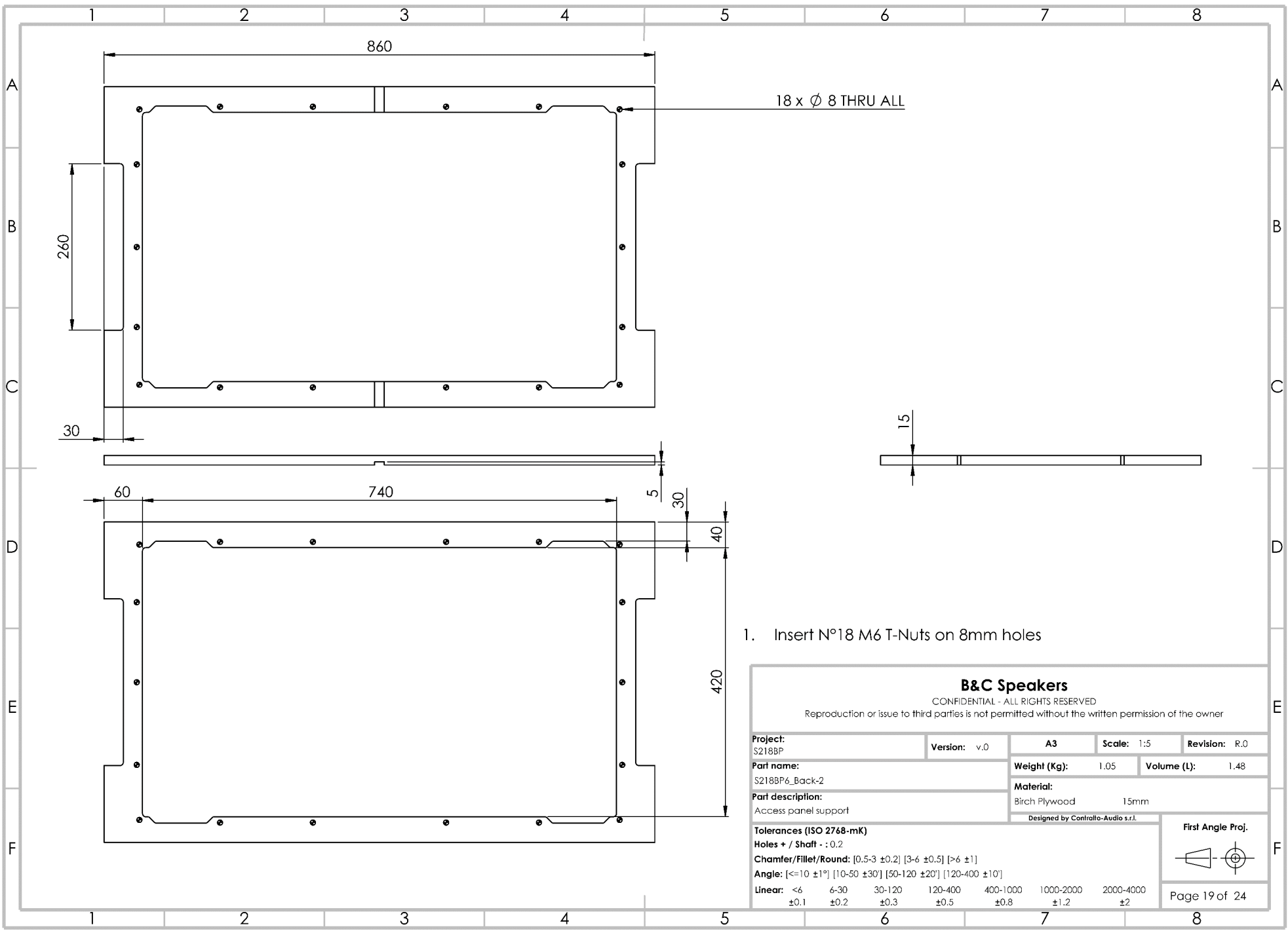
CONFIDENTIAL - ALL RIGHTS RESERVED

Reproduction or issue to third parties is not permitted without the written permission of the owner

Project: S218BP		Version: v.0	A3	Scale: 1:5	Revision: R.0
Part name: S218BP6_FrontChamber-Reinf		Weight (Kg): 0.38	Volume (L): 0.54		
Part description: Front chamber reinf.		Material: Birch Plywood 15mm		Designed by Controllo-Audio s.r.l.	
Tolerances (ISO 2768-mK)					
Holes + / Shaft : 0.2					
Chamfer/Fillet/Round: [0.5-3 ±0.2] [3-6 ±0.5] [>6 ±1]					
Angle: [<=10 ±1°] [10-50 ±30°] [50-120 ±20°] [120-400 ±10°]					
Linear:	<6 ±0.1	6-30 ±0.2	30-120 ±0.3	120-400 ±0.5	400-1000 ±0.8
				1000-2000 ±1.2	2000-4000 ±2

First Angle Proj.





1. Insert N°18 M6 T-Nuts on 8mm holes

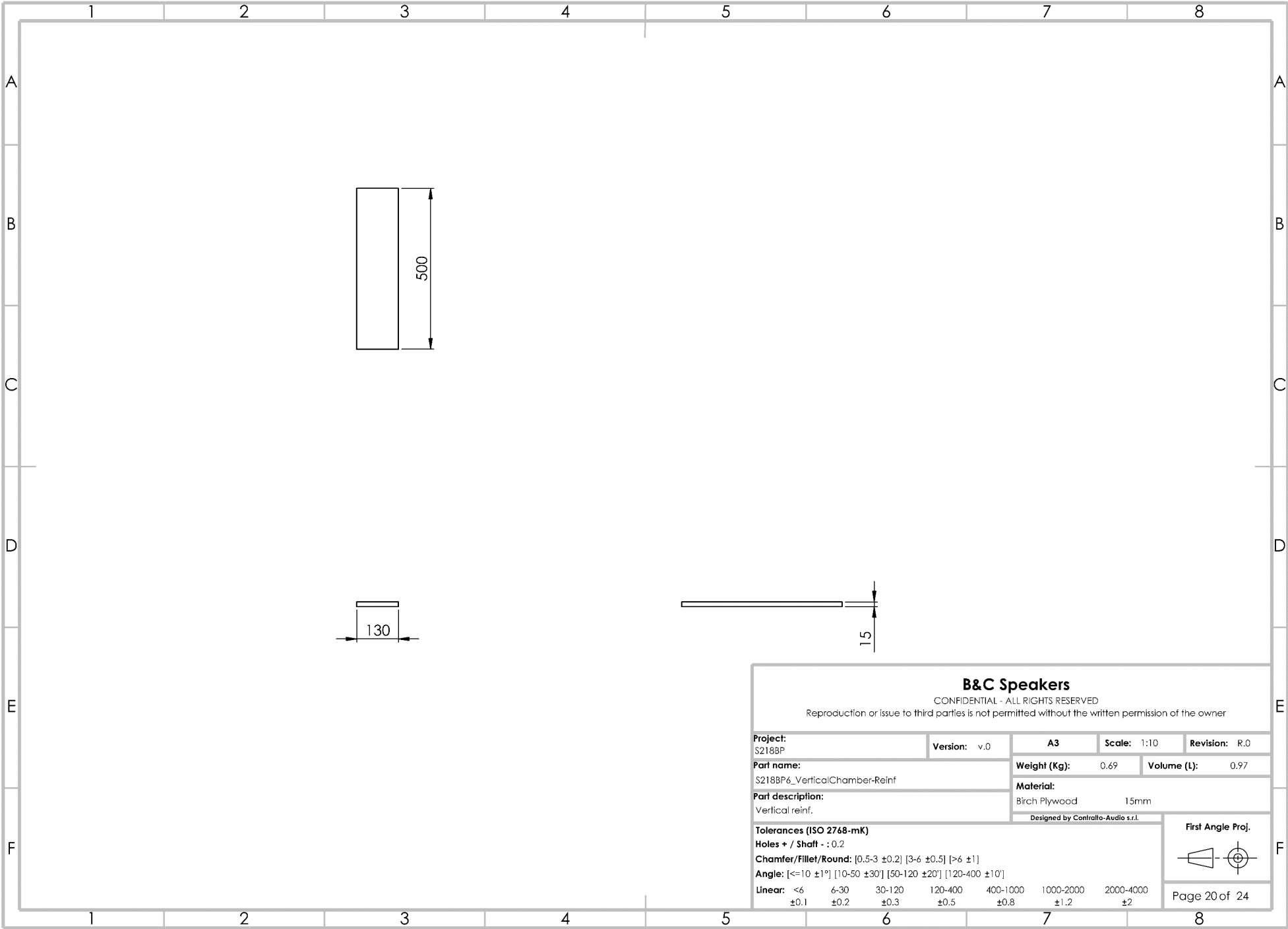
B&C Speakers
 CONFIDENTIAL - ALL RIGHTS RESERVED
 Reproduction or issue to third parties is not permitted without the written permission of the owner

Project: S218BP	Version: v.0	A3	Scale: 1:5	Revision: R.0
Part name: S218BP6_Back-2		Weight (Kg): 1.05	Volume (L): 1.48	
Part description: Access panel support		Material: Birch Plywood 15mm		
Designed by Controllo-Audio s.r.l.				

Tolerances (ISO 2768-mK)
 Holes + / Shaft - : 0.2
 Chamfer/Fillet/Round: [0.5-3 ±0.2] [3-6 ±0.5] [>6 ±1]
 Angle: [$\leq 10^\circ \pm 1^\circ$] [10-50 ±30'] [50-120 ±20'] [120-400 ±10']

Linear:	<6	6-30	30-120	120-400	400-1000	1000-2000	2000-4000
	±0.1	±0.2	±0.3	±0.5	±0.8	±1.2	±2

First Angle Proj.



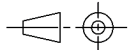
B&C Speakers

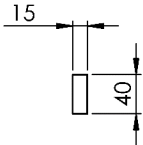
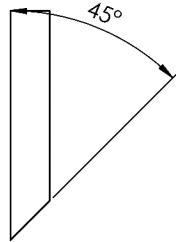
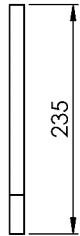
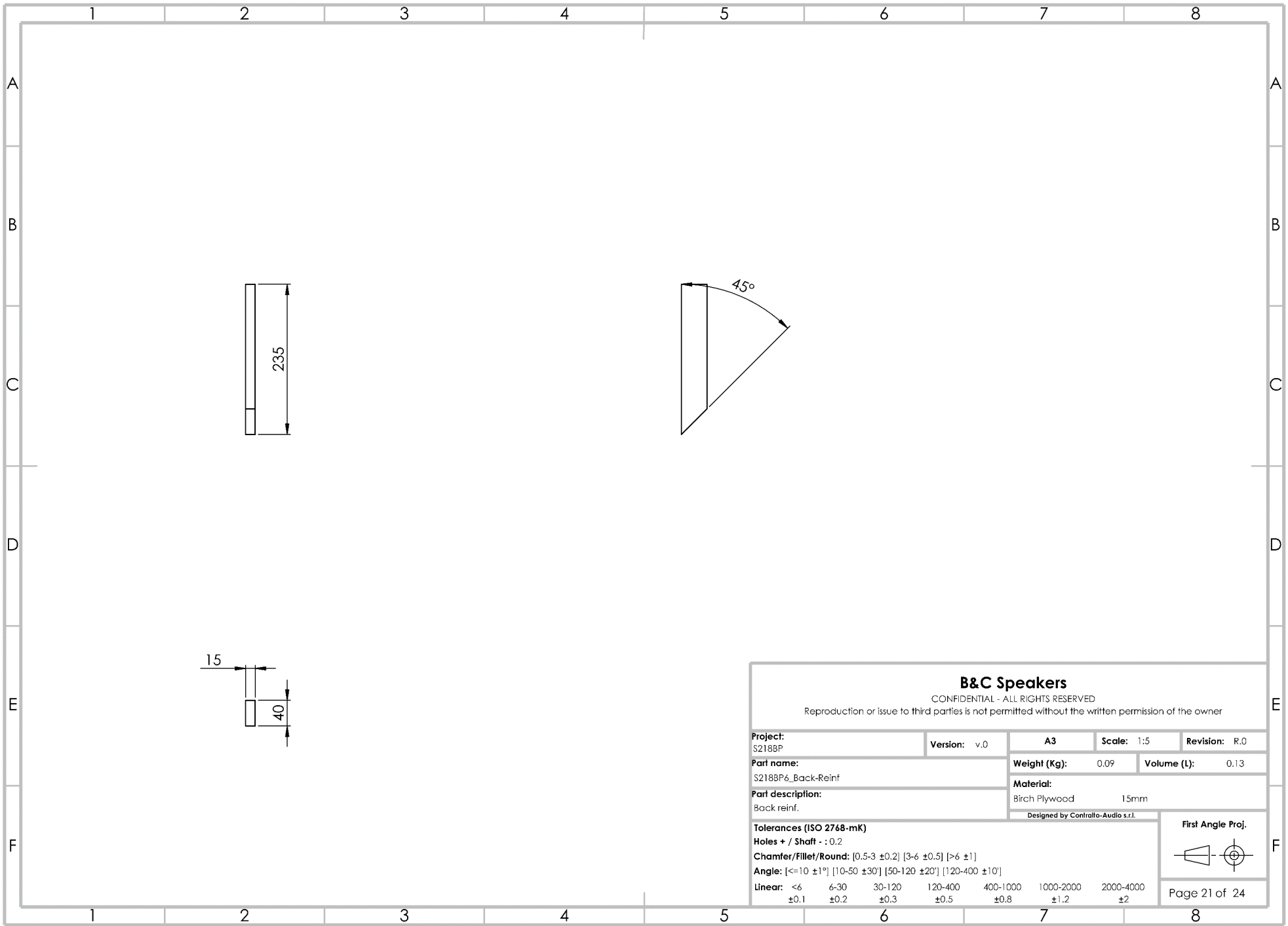
CONFIDENTIAL - ALL RIGHTS RESERVED

Reproduction or issue to third parties is not permitted without the written permission of the owner

Project: S218BP	Version: v.0	A3	Scale: 1:10	Revision: R.0
Part name: S218BP6_VerticalChamber-Reinf		Weight (Kg): 0.69	Volume (L): 0.97	
Part description: Vertical reinf.		Material: Birch Plywood 15mm		
Tolerances (ISO 2768-mK)		Designed by Control-Audio s.r.l.		
Holes + / Shaft - : 0.2				
Chamfer/Fillet/Round: [0.5-3 ±0.2] [3-6 ±0.5] [>6 ±1]				
Angle: [<=10 ±1°] [10-50 ±30°] [50-120 ±20°] [120-400 ±10°]				
Linear:	<6 ±0.1	6-30 ±0.2	30-120 ±0.3	120-400 ±0.5
			400-1000 ±0.8	1000-2000 ±1.2
				2000-4000 ±2

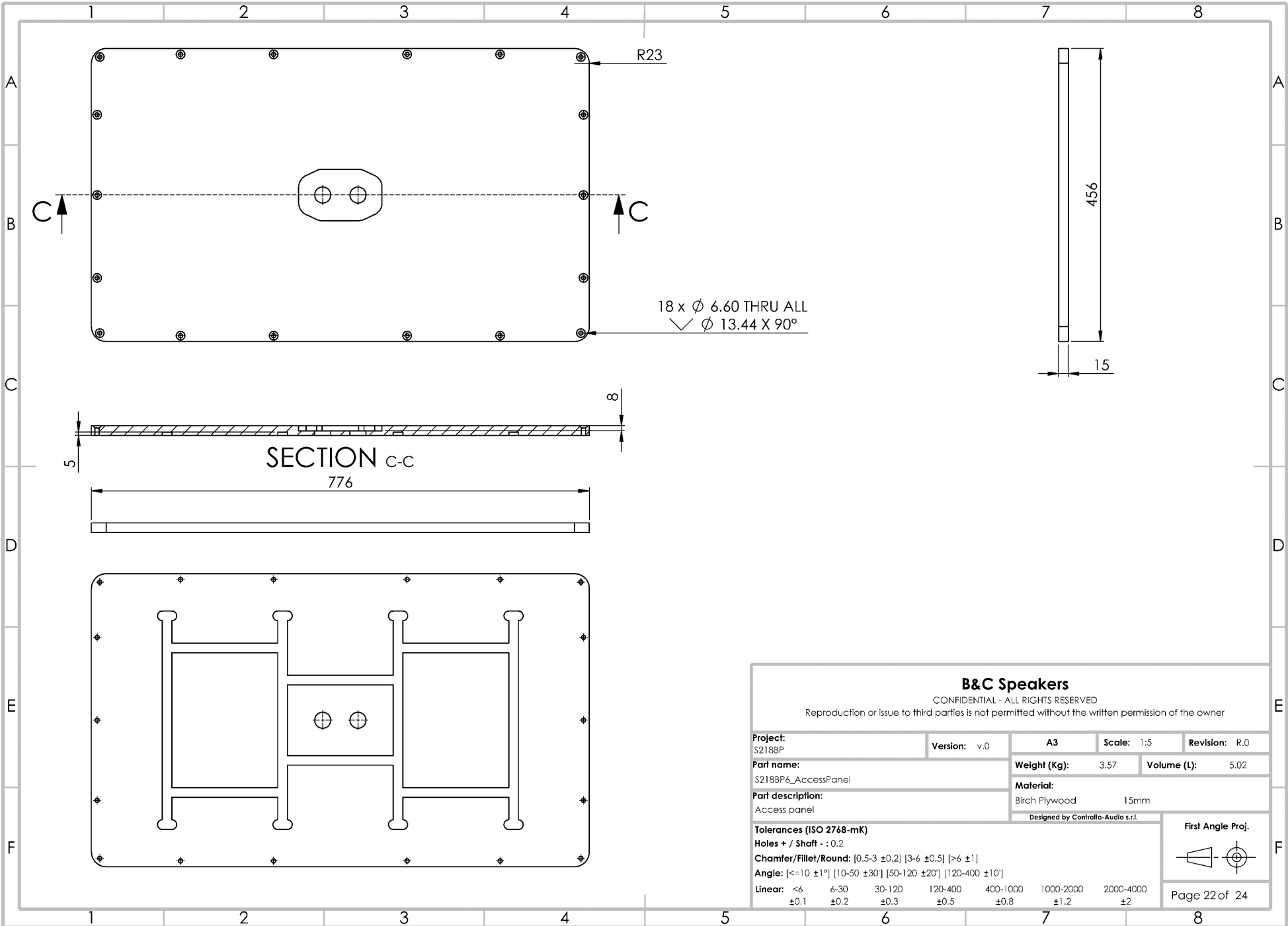
First Angle Proj.





B&C Speakers
 CONFIDENTIAL - ALL RIGHTS RESERVED
 Reproduction or issue to third parties is not permitted without the written permission of the owner

Project: S218BP	Version: v.0	A3	Scale: 1:5	Revision: R.0		
Part name: S218BP6_Back-Reinf		Weight (Kg): 0.09	Volume (L): 0.13			
Part description: Back reinf.		Material: Birch Plywood 15mm				
Tolerances (ISO 2768-mK) Holes + / Shaft - : 0.2		<small>Designed by Control-Audio s.r.l.</small>				
First Angle Proj.						
Chamfer/Fillet/Round: [0.5-3 ±0.2] [3-6 ±0.5] [>6 ±1]						
Angle: [<=10 ±1°] [10-50 ±30°] [50-120 ±20°] [120-400 ±10°]						
Linear:						
<6 ±0.1	6-30 ±0.2	30-120 ±0.3	120-400 ±0.5	400-1000 ±0.8	1000-2000 ±1.2	2000-4000 ±2
				Page 21 of 24		



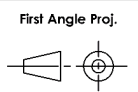
18 x \varnothing 6.60 THRU ALL
 \surd \varnothing 13.44 X 90°

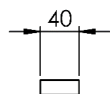
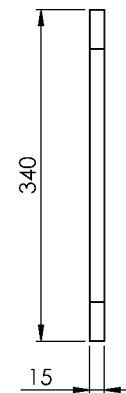
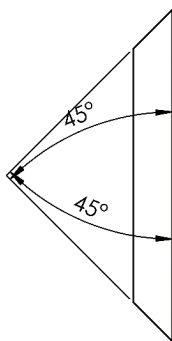
SECTION C-C
 776

B&C Speakers

CONFIDENTIAL - ALL RIGHTS RESERVED
 Reproduction or issue to third parties is not permitted without the written permission of the owner

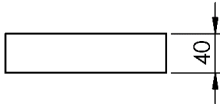
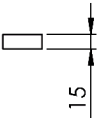
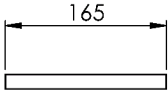
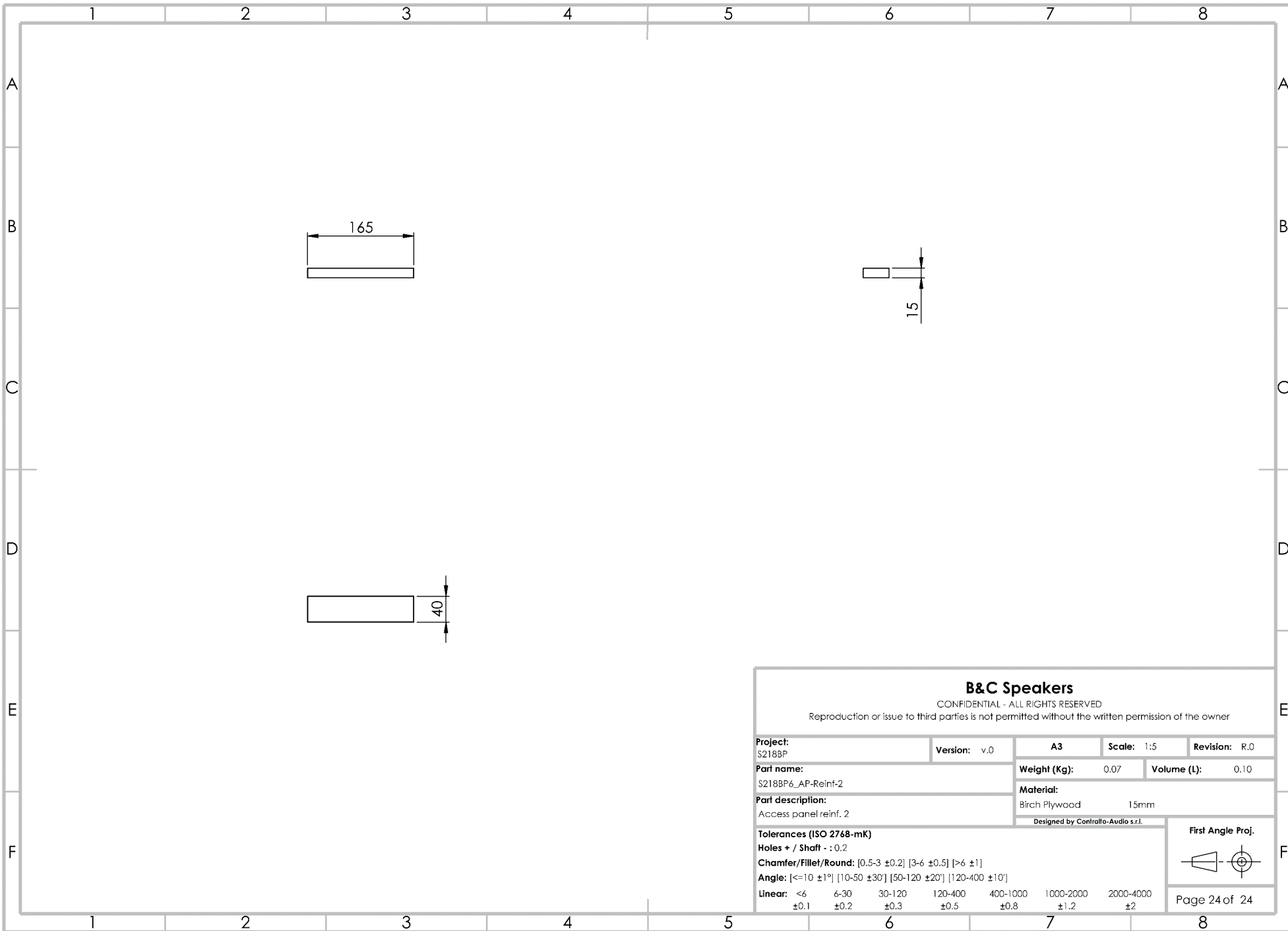
Project: S2188P	Version: v.0	A3	Scale: 1:5	Revision: R.0
Part name: S2188P6_AccessPanel		Weight (Kg): 3.57	Volume (L): 5.02	
Part description: Access panel		Material: Birch Plywood 15mm		
<small>Designed by Controllo-Audio s.r.l.</small>				
Tolerances (ISO 2768-mK)				
Holes + / Shaft - : 0.2				
Chamfer/Fillet/Round: [0.5-3 ±0.2] [3-6 ±0.5] [>6 ±1]				
Angle: [<=10 ±1°] [10-50 ±30°] [50-120 ±20°] [120-400 ±10°]				
Linear: <6 ±0.1	6-30 ±0.2	30-120 ±0.3	120-400 ±0.5	400-1000 ±0.8
			1000-2000 ±1.2	2000-4000 ±2





B&C Speakers
 CONFIDENTIAL - ALL RIGHTS RESERVED
 Reproduction or issue to third parties is not permitted without the written permission of the owner

Project: S218BP	Version: v.0	A3	Scale: 1:5	Revision: R.0			
Part name: S218BP6_AP-Reinf-1		Weight (Kg): 0.13	Volume (L): 0.18				
Part description: Access panel reinf. 1		Material: Birch Plywood 15mm					
Tolerances (ISO 2768-mK) Holes + / Shaft - : 0.2		<small>Designed by Controllo-Audio s.r.l.</small>					
Chamfer/Fillet/Round: [0.5-3 ±0.2] [3-6 ±0.5] [>6 ±1]		First Angle Proj. 					
Angle: [<=10 ±1°] [10-50 ±30°] [50-120 ±20°] [120-400 ±10°]		Page 23 of 24					
Linear:							
	<6 ±0.1	6-30 ±0.2	30-120 ±0.3	120-400 ±0.5	400-1000 ±0.8	1000-2000 ±1.2	2000-4000 ±2



B&C Speakers
 CONFIDENTIAL - ALL RIGHTS RESERVED
 Reproduction or issue to third parties is not permitted without the written permission of the owner

Project: S218BP	Version: v.0	A3	Scale: 1:5	Revision: R.0
Part name: S218BP6_AP-Reinf-2		Weight (Kg): 0.07	Volume (L): 0.10	
Part description: Access panel reinf. 2		Material: Birch Plywood 15mm		
Tolerances (ISO 2768-mK) Holes + / Shaft - : 0.2		Designed by <i>Controllo-Audio s.r.l.</i>		
Chamfer/Fillet/Round: [0.5-3 ±0.2] [3-6 ±0.5] [>6 ±1]		First Angle Proj. 		
Angle: [<=10 ±1°] [10-50 ±30°] [50-120 ±20°] [120-400 ±10°]		Page 24 of 24		
Linear:	<6 ±0.1	6-30 ±0.2	30-120 ±0.3	120-400 ±0.5
		400-1000 ±0.8	1000-2000 ±1.2	2000-4000 ±2

